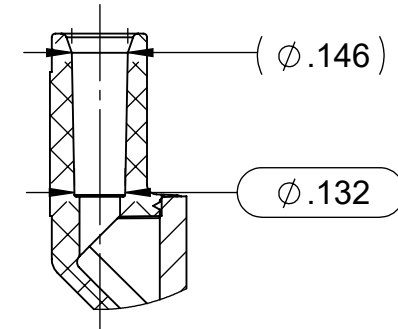
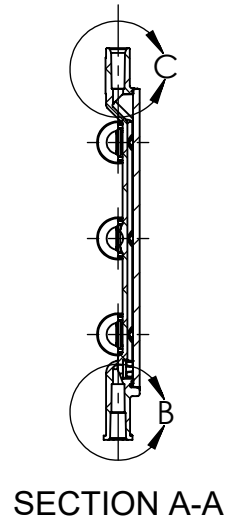
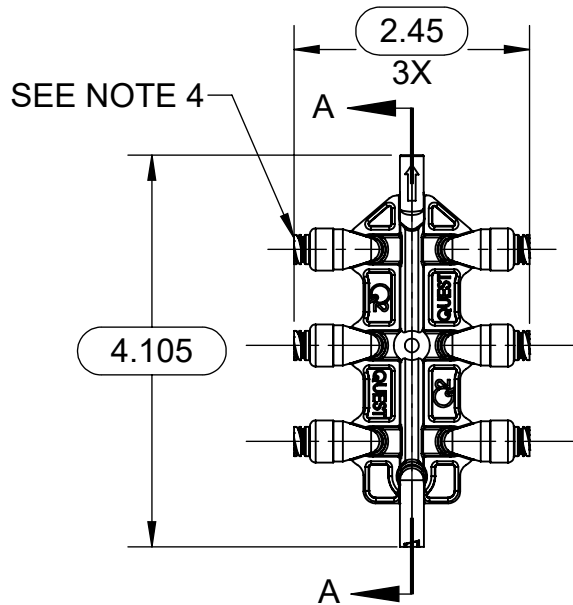
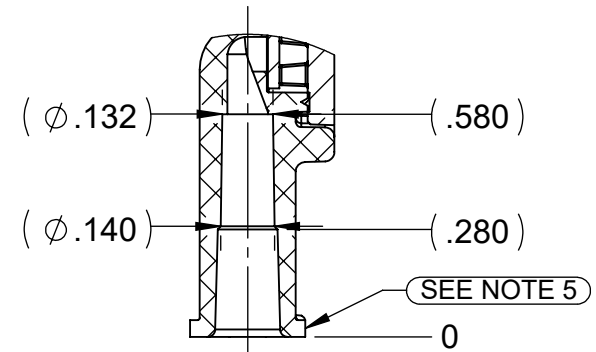


DRAWING NO. <b>C245800912</b>	REV <b>C</b>	<b>Customer Drawing</b>	REVISION HISTORY		
			REV	DESCRIPTION (ECO)	DATE    APPROVED
			B	ADD ISO80369-7 TO NOTES, ECO 8017	05/02/18    AK
			C	UPDATE O.A.L. ECO 8626	06/03/19    AK



DETAIL C  
SCALE 2 : 1



DETAIL B  
SCALE 2 : 1

NOTES:

1. MATERIAL:  
HOUSING - POLYCARBONATE  
STEM - BLUE SILICONE  
CHECKVALVE - POLYISOPRENE
2. CRITICAL DIMENSIONS ARE CIRCLED AND SUBJECT TO INSPECTION.
3. DIMENSIONS IN PARENTHESIS ARE FOR REFERENCE ONLY.
4. SWABABLE LUER IS COMPATIBLE WITH ISO594-2, AND ISO80369-7.
5. LUER COMPATIBLE WITH ISO594-2, AND ISO80369-7.

**MOLDED PARTS:**  
GATES, PARTING LINES, AND FLASH PER QUALITY CRITERIA

**PROPRIETARY AND CONFIDENTIAL**  
THE INFORMATION CONTAINED IN THIS DRAWING IS SOLE PROPERTY OF HALKEY-ROBERTS CORPORATION ST. PETERSBURG, FL. ANY REPRODUCTION IN PART OR AS A WHOLE WITHOUT THE WRITTEN PERMISSION OF HALKEY-ROBERTS CORPORATION IS PROHIBITED.

DRAWN BY S. ECKERT		DATE 9/6/2013	<b>HR® Halkey-Roberts®</b>	
APPROVED BY		DATE		
MATERIAL			TITLE	
FINISH			<b>MULTIPORT MANIFOLD</b>	
UNLESS OTHERWISE SPECIFIED: DIMENSIONS ARE IN INCHES TOLERANCES: ANGULAR: ± 1° TWO PLACE DECIMAL ± .01 THREE PLACE DECIMAL ± .005		THIRD ANGLE PROJECTION	SIZE <b>A</b>	DRAWING NO. <b>C245800912</b>
			SCALE <b>1:2</b>	REV <b>C</b>
			DO NOT SCALE DRAWING	
			SHEET 1 OF 1	