

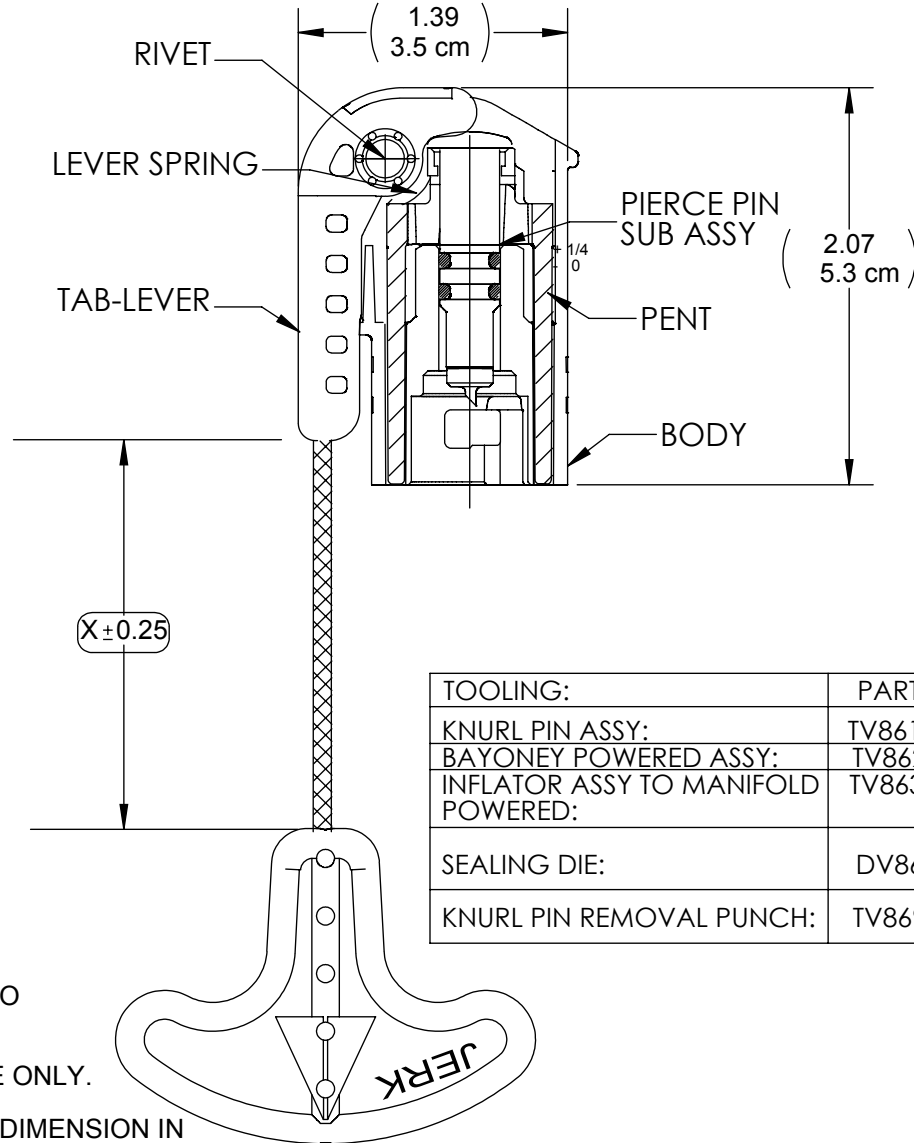
DRAWING NO.  
**CV86160WXX**

REV  
**C**

# Customer Drawing

## REVISION HISTORY

REV	DESCRIPTION (ECO)	DATE	APPROVED
B	UPDATE NOTES, ADD METRIC DIM'S ECN 4189	7/21/04	L.F.
C	ADD SUFFIX 135, N: NO TAB, ECO 7341	2/22/17	AK



NOTES:

- FIRST SUFFIX "X" INDICATES:  
T - TAB ENGLISH  
TF - TAB FRENCH - ENGLISH  
N - NO TAB - FRENCH LABEL

- SECOND SUFFIX "X" INDICATES CORD LENGTH.

SUFFIX	X ± 0.25
40	4.0 / (10.2cm)
60	6.0 / (15.2 cm)
135	13.5 / (34.3 cm)

- CRITICAL DIMENSIONS ARE CIRCLED AND SUBJECT TO INSPECTION.
- DIMENSIONS IN PARENTHESES ARE FOR REFERENCE ONLY.
- ALL DIMENSIONS ARE IN INCHES WITH THE NOMINAL DIMENSION IN METRIC BELOW.

TOOLING:	PART NO.	IFU:
KNURL PIN ASSY:	TV86118-1	----
BAYONEY POWERED ASSY:	TV86200	----
INFLATOR ASSY TO MANIFOLD POWERED:	TV86300	----
SEALING DIE:	DV86000	----
KNURL PIN REMOVAL PUNCH:	TV86900R	----

DRAWN BY	DMC	DATE	07-21-04
APPROVED BY		DATE	
MATERIAL			
FINISH			
UNLESS OTHERWISE SPECIFIED:	THIRD ANGLE PROJECTION		
DIMENSIONS ARE IN INCHES			
TOLERANCES:			
ANGULAR: ± 1°			
TWO PLACE DECIMAL ± .01			
THREE PLACE DECIMAL ± .005			

Halkey-Roberts

TITLE  
**BODY W/ TAB LEVER**

SIZE	A	DRAWING NO.	<b>CV86160WXX</b>	REV	<b>C</b>
SCALE	1:1	DO NOT SCALE DRAWING		SHEET	1 OF 1

**MOLDED PARTS:**  
GATES, PARTING LINES, AND FLASH PER QUALITY CRITERIA

**PROPRIETARY AND CONFIDENTIAL**  
THE INFORMATION CONTAINED IN THIS DRAWING IS SOLE PROPERTY OF HALKEY-ROBERTS CORPORATION ST. PETERSBURG, FL. ANY REPRODUCTION IN PART OR AS A WHOLE WITHOUT THE WRITTEN PERMISSION OF HALKEY-ROBERTS CORPORATION IS PROHIBITED.