

DRAWING NO.

C787RPF

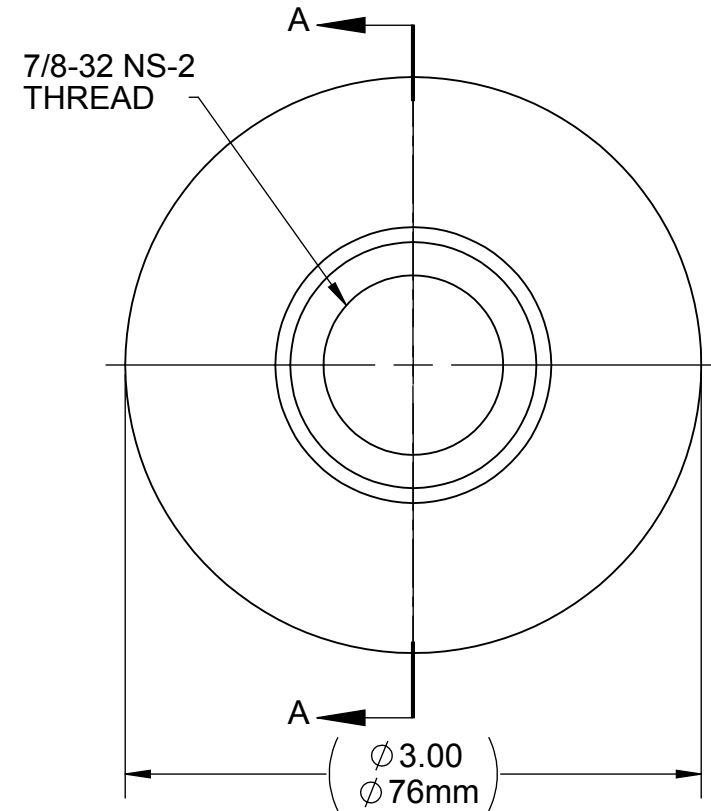
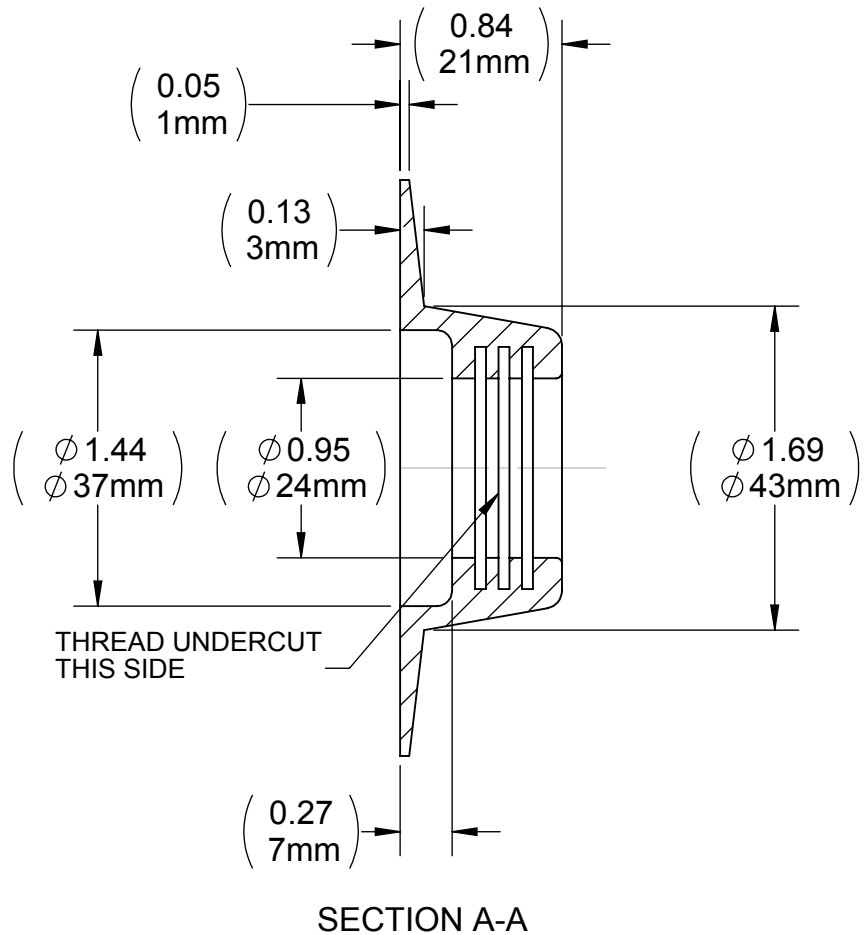
REV

C

Customer Drawing

REVISION HISTORY

REV	DESCRIPTION (ECO)	DATE	APPROVED
B	UPDATE BORDER, NOTES, ADD METRIC DIMS. ECN 4240	11/10/09	AK
C	ADD DFARS & ROHS NOTES ECO 5682	6/06/13	AK



NOTES:

- MATERIAL: NEOPRENE 80 DURO SHORE A
- MATERIALS ARE DFARS 252.225.7009, OR 252.225.7014 COMPLIANT.
- MATERIALS ARE ROHS COMPLIANT.
- TEMP RESISTANT -65°F TO 180°F.
- CRITICAL DIMENSIONS ARE CIRCLED AND SUBJECT TO INSPECTION.
- DIMENSIONS IN PARENTHESES ARE FOR REFERENCE ONLY.
- ALL DIMENSIONS ARE IN INCHES WITH NOMINAL DIMENSION IN METRIC BELOW.

TOOLING:	PART NO.	IFU:
SEALING DIE:	-----	-----
ASSEMBLY:		IFU-787RPF

MOLDED PARTS:

GATES, PARTING LINES, AND FLASH PER QUALITY CRITERIA

PROPRIETARY AND CONFIDENTIAL

THE INFORMATION CONTAINED IN THIS DRAWING IS SOLE PROPERTY OF HALKEY-ROBERTS CORPORATION ST. PETERSBURG, FL. ANY REPRODUCTION IN PART OR AS A WHOLE WITHOUT THE WRITTEN PERMISSION OF HALKEY-ROBERTS CORPORATION IS PROHIBITED.

DRAWN BY JHK

DATE 04/17/75

APPROVED BY

DATE

MATERIAL

NEOPRENE 80 DURO SHORE A

FINISH

UNLESS OTHERWISE SPECIFIED:

DIMENSIONS ARE IN INCHES

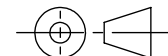
TOLERANCES:

ANGULAR: ± 1°

TWO PLACE DECIMAL ± .01

THREE PLACE DECIMAL ± .005

THIRD ANGLE PROJECTION



Halkey-Roberts

TITLE

FLANGE 780 VALVE

SIZE

A

DRAWING NO.

C787RPF

REV

C

SCALE

1:1

DO NOT SCALE DRAWING

SHEET

1 OF 1