

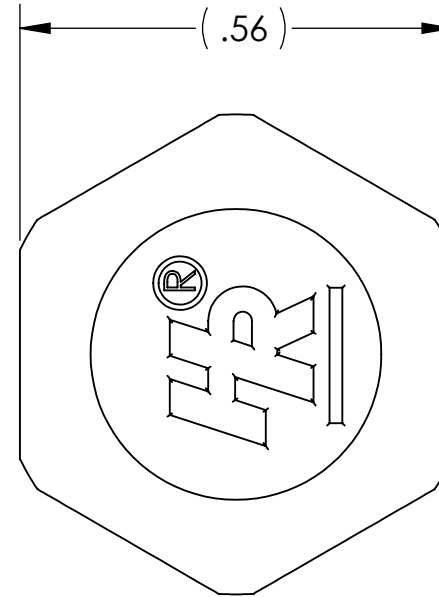
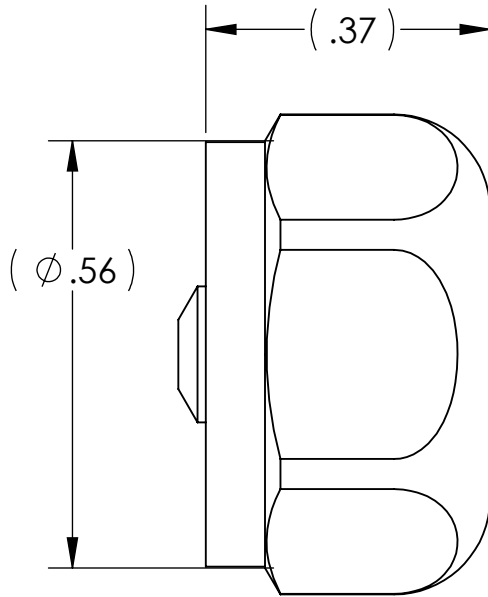
DRAWING NO.  
**830B03**

REV  
**B**

# Customer Drawing

## REVISION HISTORY

REV	DESCRIPTION (ECO)	DATE	APPROVED
A	NEW DRW. ECN 3895	10/06/08	AK
B	ECO 6803	1/12/16	LF

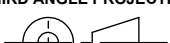


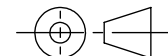
### NOTES:

1. CRITICAL DIMENSIONS ARE CIRCLED AND SUBJECT TO INSPECTION.
2. DIMENSIONS IN PARENTHESES ARE FOR REFERENCE ONLY.

**MOLDED PARTS:**  
GATES, PARTING LINES, AND FLASH PER QUALITY CRITERIA

**PROPRIETARY AND CONFIDENTIAL**  
THE INFORMATION CONTAINED IN THIS DRAWING IS SOLE PROPERTY OF HALKEY-ROBERTS CORPORATION ST. PETERSBURG, FL. ANY REPRODUCTION IN PART OR AS A WHOLE WITHOUT THE WRITTEN PERMISSION OF HALKEY-ROBERTS CORPORATION IS PROHIBITED.

<b>DRAWN BY</b>	SJR	<b>DATE</b>	1/13/04
<b>APPROVED BY</b>	JRE	<b>DATE</b>	
<b>MATERIAL</b>			
<b>FINISH</b>			
<b>UNLESS OTHERWISE SPECIFIED:</b> DIMENSIONS ARE IN INCHES TOLERANCES: ANGULAR: ± 1° TWO PLACE DECIMAL ± .01 THREE PLACE DECIMAL ± .005		<b>THIRD ANGLE PROJECTION</b> 	



**Halkey-Roberts**

**TITLE**  
**CAP**

<b>SIZE</b>	<b>DRAWING NO.</b>	<b>REV</b>
<b>A</b>	<b>830B03</b>	<b>B</b>
<b>SCALE</b>	<b>DO NOT SCALE DRAWING</b>	<b>SHEET</b>
<b>4:1</b>		<b>1 OF 1</b>