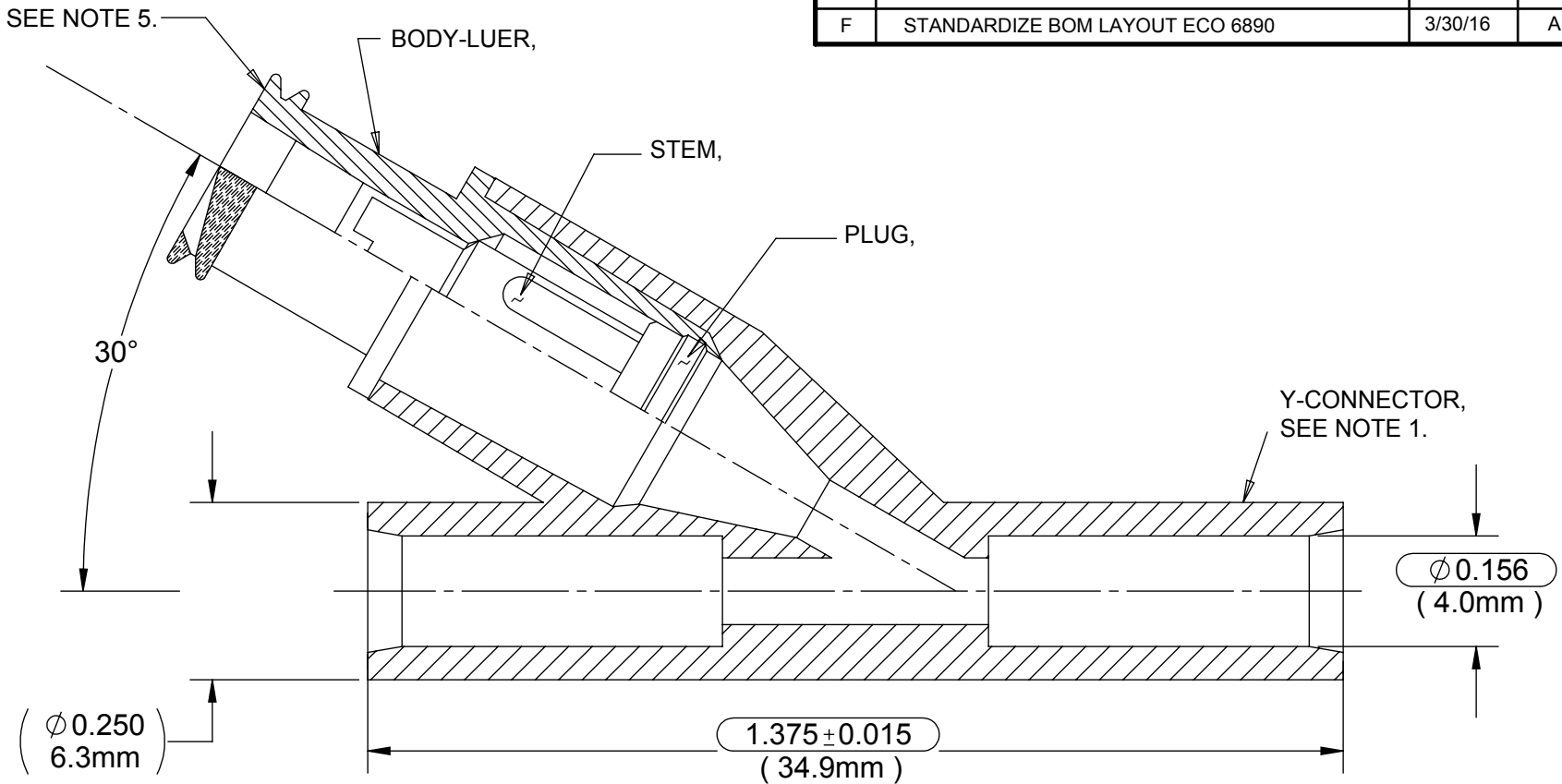


DRAWING NO. <b>C2479000XX</b>	REV <b>F</b>	<b>Customer Drawing</b>	REVISION HISTORY			
			REV	DESCRIPTION (ECO)	DATE	APPROVED
			E	ADD NOTE 6. MIN BACK PRESSURE ECN 4383	3/17/10	AK
			F	STANDARDIZE BOM LAYOUT ECO 6890	3/30/16	AK



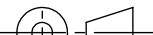
NOTES:

- SUFFIX INDICATES MATERIAL AND COLOR.  
01 - PVC CLEAR
- CRITICAL DIMENSIONS ARE CIRCLED AND SUBJECT TO INSPECTION.
- DIMENSIONS IN PARENTHESES ARE FOR REFERENCE ONLY.
- ALL DIMENSIONS ARE IN INCHES, WITH NOMINAL DIMENSIONS IN METRIC BELOW.
- LUER COMPATIBLE WITH ISO594-2.
- VALVE TO MAINTAIN 22 PSI MINIMUM BACK PRESSURE.

QUALITY CRITERIA
O.D. FLASH: 0.015 MAX (0.4mm)
GATE VESTIGE: 0.01 MAX (0.3mm)
EMBEDDED PARTICLES, BUBBLES, SPOTS STAINS: 0.3mm <sup>2</sup> MAX. NO MORE THAN 3 PER PART.

**MOLDED PARTS:**  
GATES, PARTING LINES, AND FLASH PER QUALITY CRITERIA

**PROPRIETARY AND CONFIDENTIAL**  
THE INFORMATION CONTAINED IN THIS DRAWING IS SOLE PROPERTY OF HALKEY-ROBERTS CORPORATION ST. PETERSBURG, FL. ANY REPRODUCTION IN PART OR AS A WHOLE WITHOUT THE WRITTEN PERMISSION OF HALKEY-ROBERTS CORPORATION IS PROHIBITED.

<b>DRAWN BY</b>	<b>DMC</b>	<b>DATE</b>	<b>6-8-04</b>
<b>APPROVED BY</b>	<b>JRE</b>	<b>DATE</b>	
<b>MATERIAL</b>	<b>SEE NOTE</b>		
<b>FINISH</b>			
<b>UNLESS OTHERWISE SPECIFIED:</b> DIMENSIONS ARE IN INCHES TOLERANCES: ANGULAR: ± 1° TWO PLACE DECIMAL ± .01 THREE PLACE DECIMAL ± .005		<b>THIRD ANGLE PROJECTION</b> 	

**Y CONNECTOR ASSY.**

DRAWING NO. **C2479000XX**

REV **F**

**DO NOT SCALE DRAWING**

SHEET 1 OF 2