

DRAWING NO.

CV24310

REV

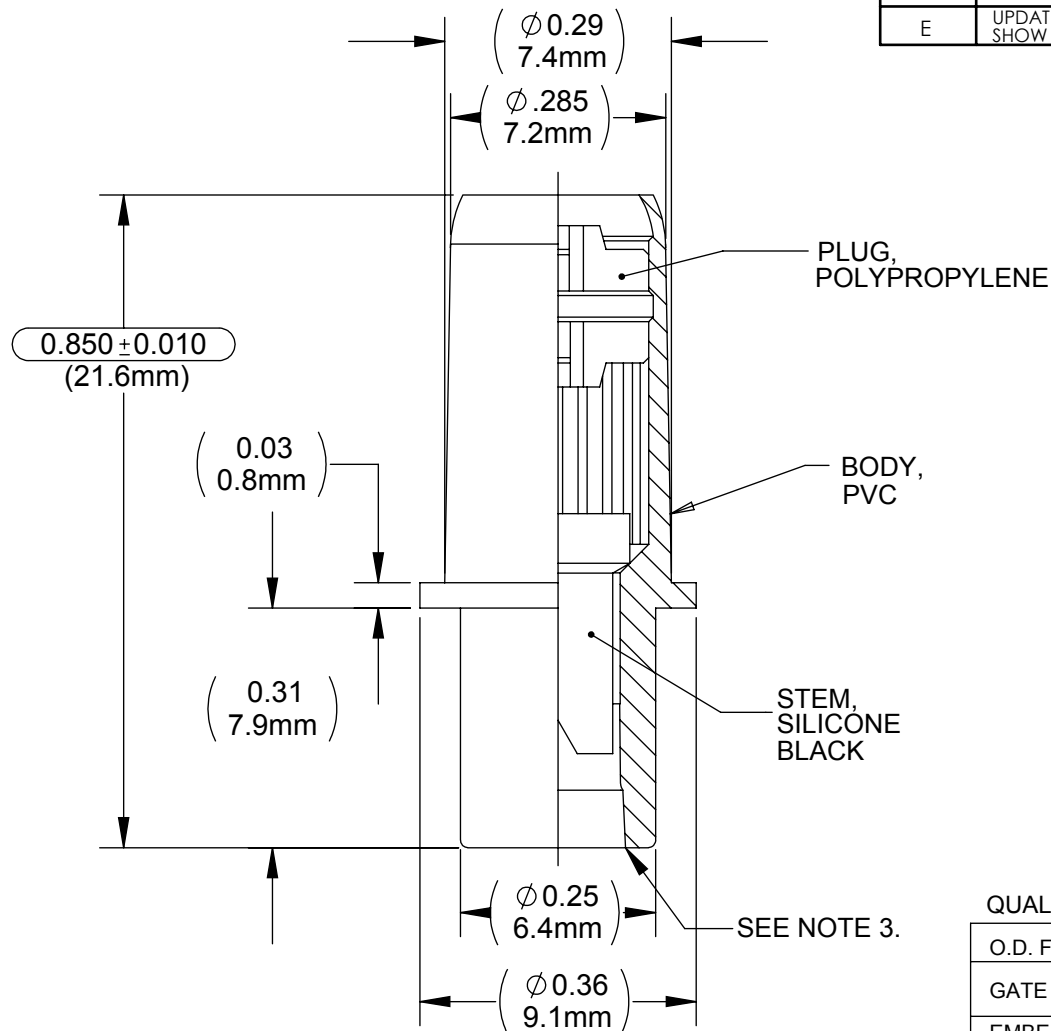
E



## Customer Drawing

## Revision History

| REV | DESCRIPTION (ECO)                                  | DATE     | APPROVED |
|-----|--|----------|----------|
| 4   | REDRAWN  | 10-02-96 | JW       |
| E   | UPDATE BORDER,<br>SHOW CRITICAL DIMENSION ECN 3965 | 3/18/09  | AK       |



## NOTES:

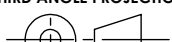
1. CRITICAL DIMENSIONS ARE CIRCLED, AND SUBJECT TO INSPECTION. DIMENSIONS IN PARENTHESES ARE FOR REFERENCE ONLY.
2. ALL DIMENSIONS ARE IN INCHES WITH NOMINAL DIMENSIONS SHOWN IN MILLIMETERS BELOW.
3. LUER COMPATIBLE WITH ISO594-2.

## QUALITY CRITERIA:

O.D. FLASH 0.015 MAX. (0.4MM)

GATE VESTIGE 0.01 MAX. (0.3MM)

EMBEDDED PARTICLES, BUBBLES, SPOTS, STAINS: 0.3mm<sup>2</sup> MAX. NO MORE THAN 3 PER PART.

|                                    |          |   |         |
|------------------------------------|----------|---|---------|
| <b>DRAWN BY</b>                    | DMC      | <b>DATE</b>   | 3/18/09 |
| <b>APPROVED BY</b>                 |          | <b>DATE</b>   | -       |
| <b>MATERIAL</b>                    | AS NOTED |   |         |
| <b>FINISH</b>                      |          |   |         |
| <b>UNLESS OTHERWISE SPECIFIED:</b> |          | <b>THIRD ANGLE PROJECTION</b>   |         |
| DIMENSIONS ARE IN INCHES           |          |  |         |
| TOLERANCES:                        |          |   |         |
| ANGULAR: ± 1°                      |          |   |         |
| TWO PLACE DECIMAL ± .01            |          |   |         |
| THREE PLACE DECIMAL ± .005         |          |   |         |



Halkey-Roberts

TITLE CATHETER VALVE ASSY.

|       |     |                      |         |       |        |
|-------|-----|----------------------|---------|-------|--------|
| SIZE  | A   | DRAWING NO.          | CV24310 | REV   | E      |
| SCALE | 4:1 | DO NOT SCALE DRAWING |         | SHEET | 1 OF 2 |

## MOLDED PARTS:

GATES, PARTING LINES, AND FLASH PER QUALITY CRITERIA

## PROPRIETARY AND CONFIDENTIAL

THE INFORMATION CONTAINED IN THIS DRAWING IS THE SOLE PROPERTY OF HALKEY-ROBERTS CORPORATION ST. PETERSBURG, FL. ANY REPRODUCTION IN PART OR AS A WHOLE WITHOUT THE WRITTEN PERMISSION OF HALKEY-ROBERTS CORPORATION IS PROHIBITED.