

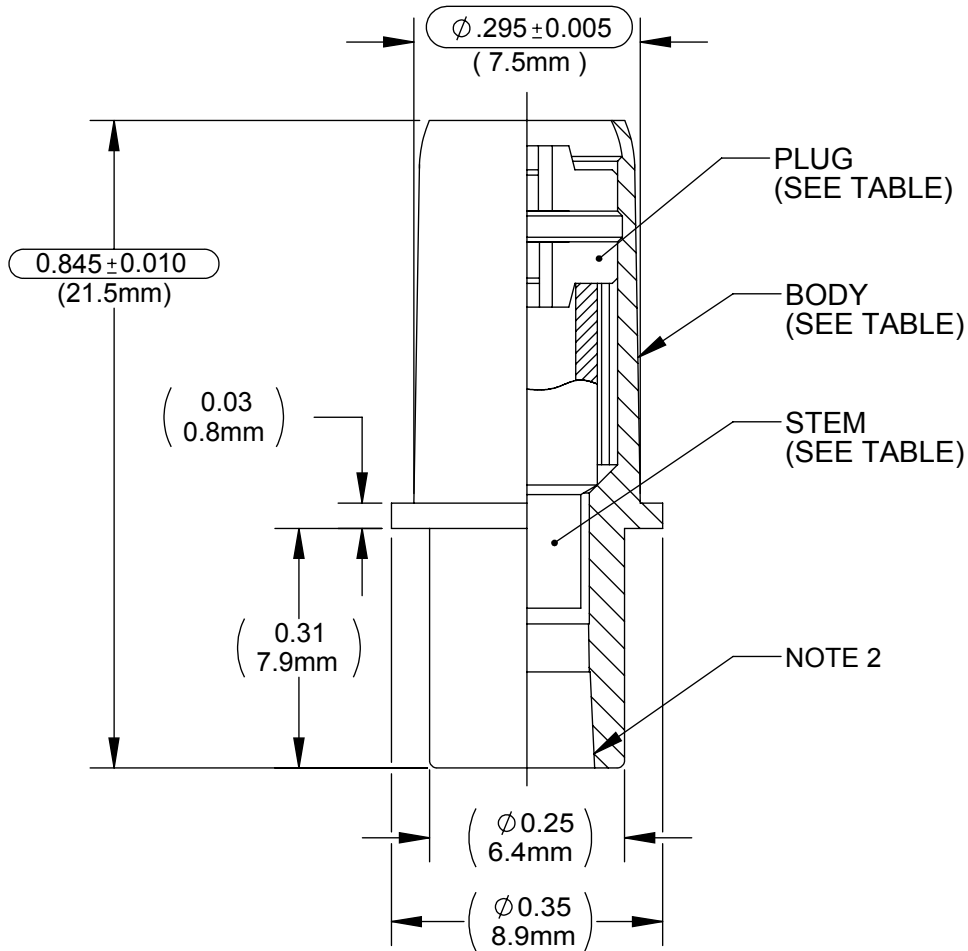
DRAWING NO.
CV24300XPC

REV
B

Customer Drawing

REVISION HISTORY

REV	DESCRIPTION (ECO)	DATE	APPROVED
A	NEW DRW. ECO 6990	6/10/16	AK
B	ECO 7029 MAKE Ø .295±.005 CRITICAL	7/12/16	AK



SUFFIX "X"	BODY	STEM	PLUG
G	CLEAR POLYCARBONATE RX2530 GAMMA	GREEN SILICONE RUBBER CLS2600HR	POLYPROPYLENE H0500HN
W	CLEAR POLYCARBONATE RX2530 GAMMA	OFF-WHITE SILICONE RUBBER CLS2600HR	POLYPROPYLENE H0500HN

QUALITY CRITERIA:

O.D. FLASH 0.015 MAX. (0.4mm)
GATE VESTIGE 0.01 MAX. (0.3mm)
EMBEDDED PARTICLES, BUBBLES, SPOTS, STAINS: 0.3mm ² MAX. NO MORE THAN 3 PER PART.

- NOTES:
- CRITICAL DIMENSIONS CIRCLED AND SUBJECT TO INSPECTION. DIMENSIONS IN PARENTHESES FOR REFERENCE ONLY
 - LUER COMPATIBLE WITH ISO594-1

DRAWN BY	DMC	DATE	6/10/16
APPROVED BY		DATE	
MATERIAL	SEE NOTE		
FINISH			
UNLESS OTHERWISE SPECIFIED:	THIRD ANGLE PROJECTION		
DIMENSIONS ARE IN INCHES			
TOLERANCES:			
ANGULAR: ± 1°			
TWO PLACE DECIMAL ± .01	SCALE	4:1	
THREE PLACE DECIMAL ± .005			

Halkey-Roberts

TITLE **CATHETER VALVE ASSY.**

SIZE **A** DRAWING NO. **CV24300XPC** REV **B**

SCALE **4:1** SHEET **1 OF 1**

DO NOT SCALE DRAWING

MOLDED PARTS:
GATES, PARTING LINES, AND FLASH PER QUALITY CRITERIA

PROPRIETARY AND CONFIDENTIAL

THE INFORMATION CONTAINED IN THIS DRAWING IS SOLE PROPERTY OF HALKEY-ROBERTS CORPORATION ST. PETERSBURG, FL. ANY REPRODUCTION IN PART OR AS A WHOLE WITHOUT THE WRITTEN PERMISSION OF HALKEY-ROBERTS CORPORATION IS PROHIBITED.