

DRAWING NO.

C251001003

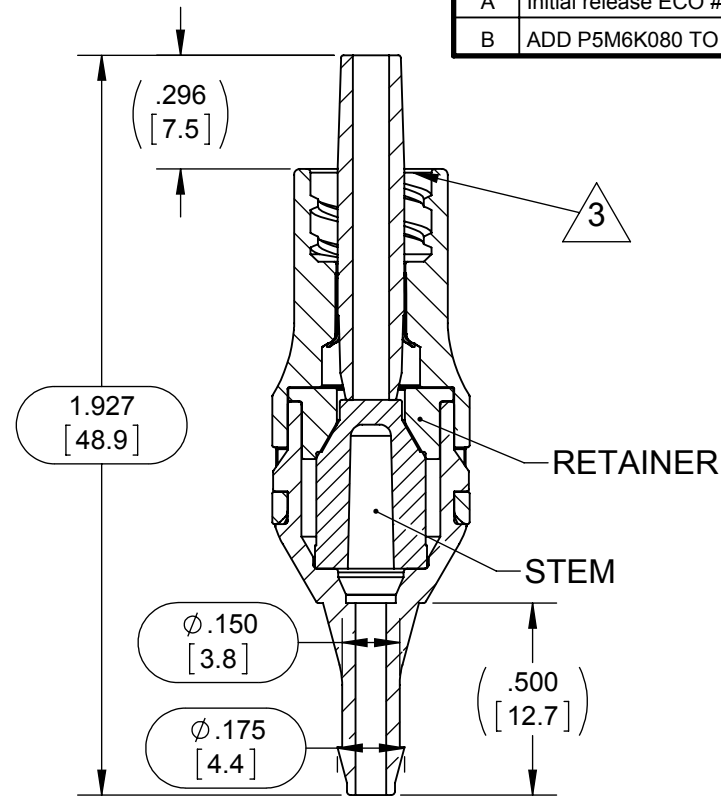
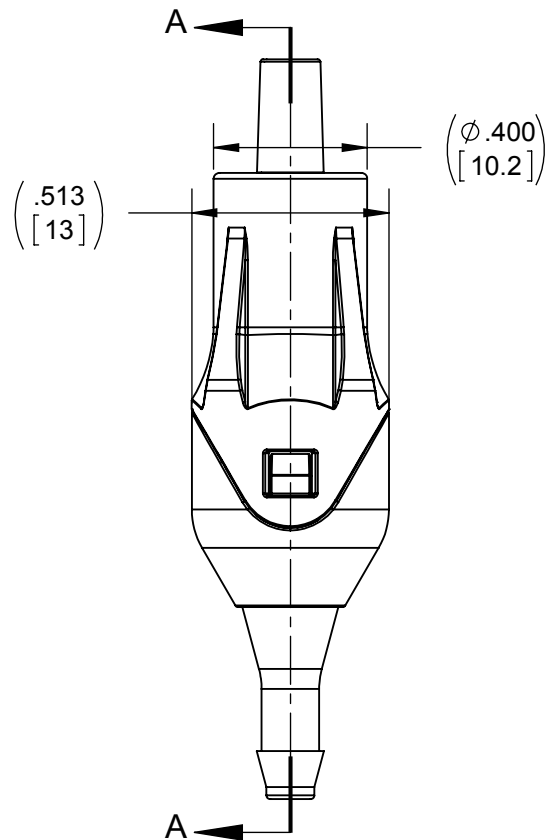
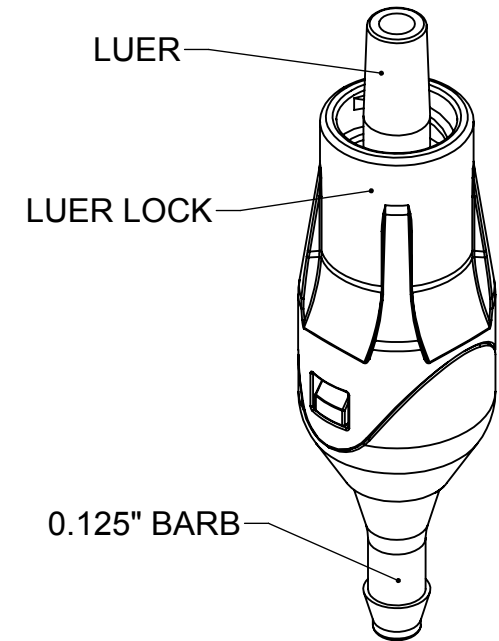
REV

B

## Customer Drawing

## REVISION HISTORY

REV	DESCRIPTION (ECO)	DATE	APPROVED
A	Initial release ECO #6331	2/5/15	AK
B	ADD P5M6K080 TO BOM, ECO 6570	7/15/15	AK

SECTION A-A  
SCALE 2 : 1

## NOTES:

1. DIMENSIONS IN PARENTHESES ARE FOR REFERENCE ONLY.
2. ALL DIMENSIONS ARE IN INCHES WITH THE NOMINAL DIMENSION IN MILLIMETERS BELOW.
3. LUER COMPATIBLE WITH ISO 594.

## VALVE SPECIFICATION;

BACK PRESSURE: > 45 PSI, REF. (3.1 BAR).  
 FLOW RATE: 498 ML/ MIN. ( 29,880 ML/HR ) @ 1 PSI, (0.07 BAR) ( 30 INCHES HEAD HEIGHT).  
 BIOCOMPATIBILITY: PASSES ISO 10993, PART 1.  
 MATERIALS: ALL MATERIALS ARE GAMMA RESISTANT, MEET USP CLASS VI; ARE DEHP, AND LATEX FREE.  
 PACKAGING: DOUBLE PLASTIC BAGGED; 2000 PER BAG, 10,000 PER BOX.  
 POTENTIAL STERILIZATION: ETO; AND GAMMA, BASED ON RAW MATERIAL SPECIFICATIONS.

QUALITY CRITERIA
O.D. FLASH; 0.015 MAX. (0.4mm)
GATE VESTIGE: 0.01MAX. (0.3mm)
EMBEDDED PARTICLES, BUBBLE SPOTS, STAINS; 0.3mm <sup>2</sup> MAX. NO MORE THAN 3 PER PART.

## MOLDED PARTS:

GATES, PARTING LINES, AND FLASH PER QUALITY CRITERIA

## PROPRIETARY AND CONFIDENTIAL

THE INFORMATION CONTAINED IN THIS DRAWING IS SOLE PROPERTY OF HALKEY-ROBERTS CORPORATION ST. PETERSBURG, FL. ANY REPRODUCTION IN PART OR AS A WHOLE WITHOUT THE WRITTEN PERMISSION OF HALKEY-ROBERTS CORPORATION IS PROHIBITED.

DRAWN BY	S. Rogier	DATE	2/5/15
APPROVED BY		DATE	
MATERIAL	See Notes		
FINISH			
UNLESS OTHERWISE SPECIFIED:	THIRD ANGLE PROJECTION		
DIMENSIONS ARE IN INCHES			
TOLERANCES:			
ANGULAR: ± 1°			
TWO PLACE DECIMAL ± .01			
THREE PLACE DECIMAL ± .005			



Halkey-Roberts

TITLE Male Luer Valve - 0.125" Barb

SIZE	DRAWING NO.	REV
A	C251001003	B
SCALE	DO NOT SCALE DRAWING	SHEET
1:1		1 OF 2