

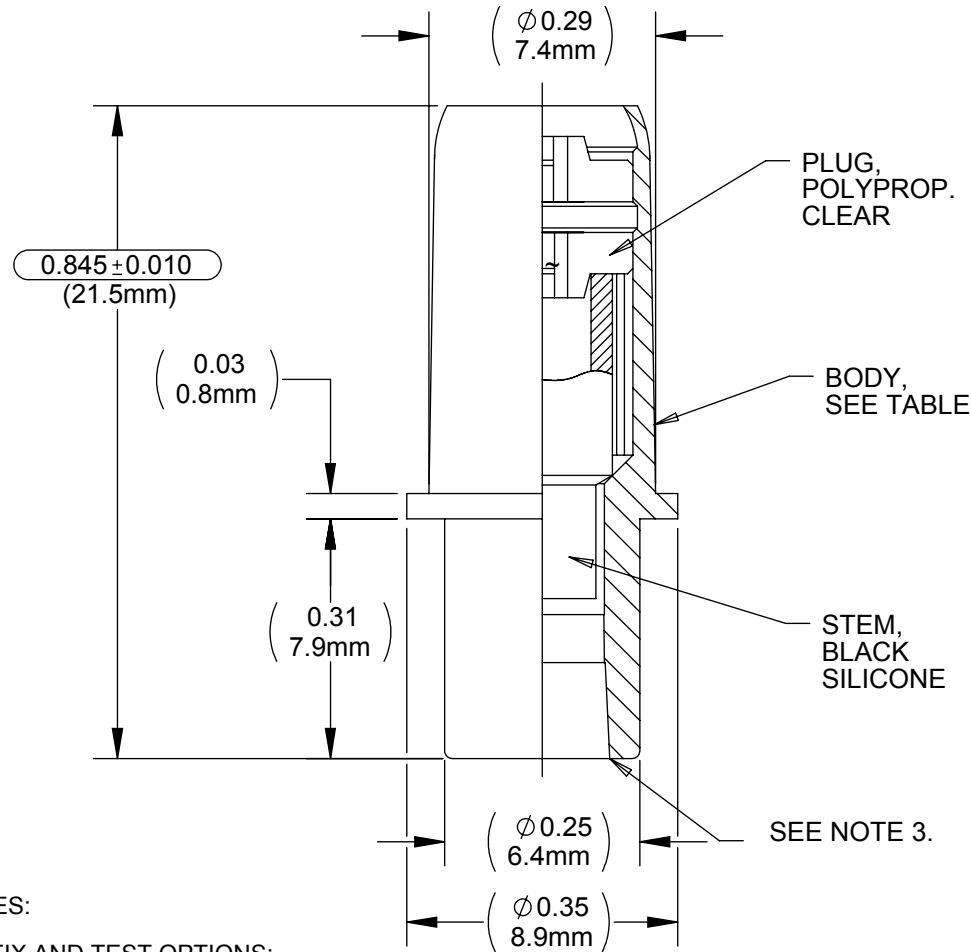
DRAWING NO.  
**CV24300AX**

REV  
**C**

# Customer Drawing

## Revision History

REV	DESCRIPTION (ECO)	DATE	APPROVED
B	UPDATE TESTING FOR "WT" SUFFIX ECN 4448	6/04/10	P.M.
C	CLARIFY TEST REQUIREMENTS FOR WT SUFFIX PER CUSTOMER REQUEST ECN 4480	7/12/10	AK



SUFFIX	BODY
W	ABS WHITE
WBM	ABS WHITE
WT	ABS WHITE

**NOTES:**

**SUFFIX AND TEST OPTIONS:**

- W: TEST REQ. 1 PSI WITH 0.1 ccpm MAX LEAK RATE.
- WBM: TEST REQ. 1 PSI WITH .0025 ccpm MAX LEAK RATE.
- WT: TEST REQ: 100% LEAK TEST @ 1 PSI WITH .0025 ccpm, MAX LEAK RATE.  
100% PRESSURE DECAY TEST-10 PSI WITH 1.3, PSI MAX LEAK RATE.

**QUALITY CRITERIA:**

O.D. FLASH 0.015 MAX. (0.4MM)
GATE VESTIGE 0.01 MAX. (0.3MM)
EMBEDDED PARTICLES, BUBBLES, SPOTS, STAINS: 0.3mm <sup>2</sup> MAX. NO MORE THAN 3 PER PART.

1. CRITICAL DIMENSIONS ARE CIRCLED AND SUBJECT TO INSPECTION. DIMENSIONS IN PARANtheses ARE FOR REFERENCE ONLY.
2. ALL DIMENSIONS ARE IN INCHES WITH THE NOMINAL DIMENSIONS IN MILLIMETERS BELOW.
3. LUER COMPATIBLE WITH ISO594-1.

<b>DRAWN BY</b>	M.S.	<b>DATE</b>	-
<b>APPROVED BY</b>	J.W.	<b>DATE</b>	01-31-01
<b>MATERIAL</b>	AS NOTED		
<b>FINISH</b>			
<b>UNLESS OTHERWISE SPECIFIED:</b>	THIRD ANGLE PROJECTION		
<small>DIMENSIONS ARE IN INCHES TOLERANCES: ANGULAR: ± 1° TWO PLACE DECIMAL ± .01 THREE PLACE DECIMAL ± .005</small>			

**Halkey-Roberts**

**TITLE CATHETER VALVE ASSY.**

**SIZE A** **DRAWING NO. CV24300AX** **REV C**

**SCALE 4:1** **DO NOT SCALE DRAWING** **SHEET 1 OF 2**

**MOLDED PARTS:**  
GATES, PARTING LINES, AND FLASH PER QUALITY CRITERIA

**PROPRIETARY AND CONFIDENTIAL**

THE INFORMATION CONTAINED IN THIS DRAWING IS THE SOLE PROPERTY OF HALKEY-ROBERTS CORPORATION ST. PETERSBURG, FL. ANY REPRODUCTION IN PART OR AS A WHOLE WITHOUT THE WRITTEN PERMISSION OF HALKEY-ROBERTS CORPORATION IS PROHIBITED.