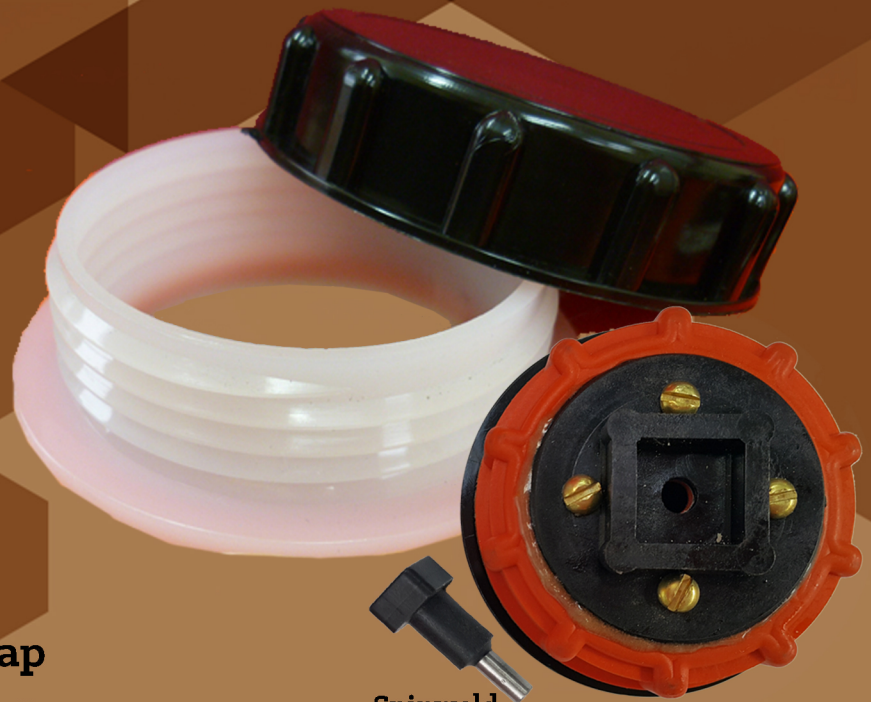


Indac Spinwelds American Buttress Filler + Cap

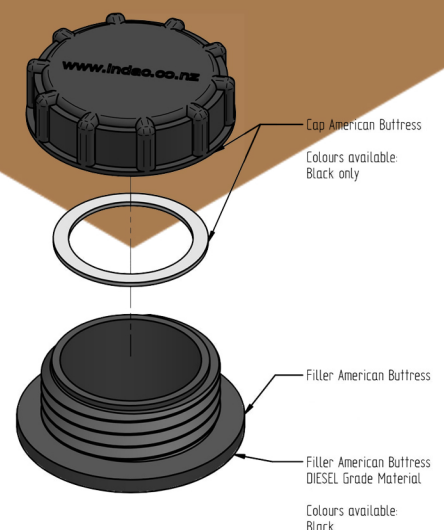


The spinweld quick fit system allows fast and accurate insertion of threaded spinwelds into water tanks.

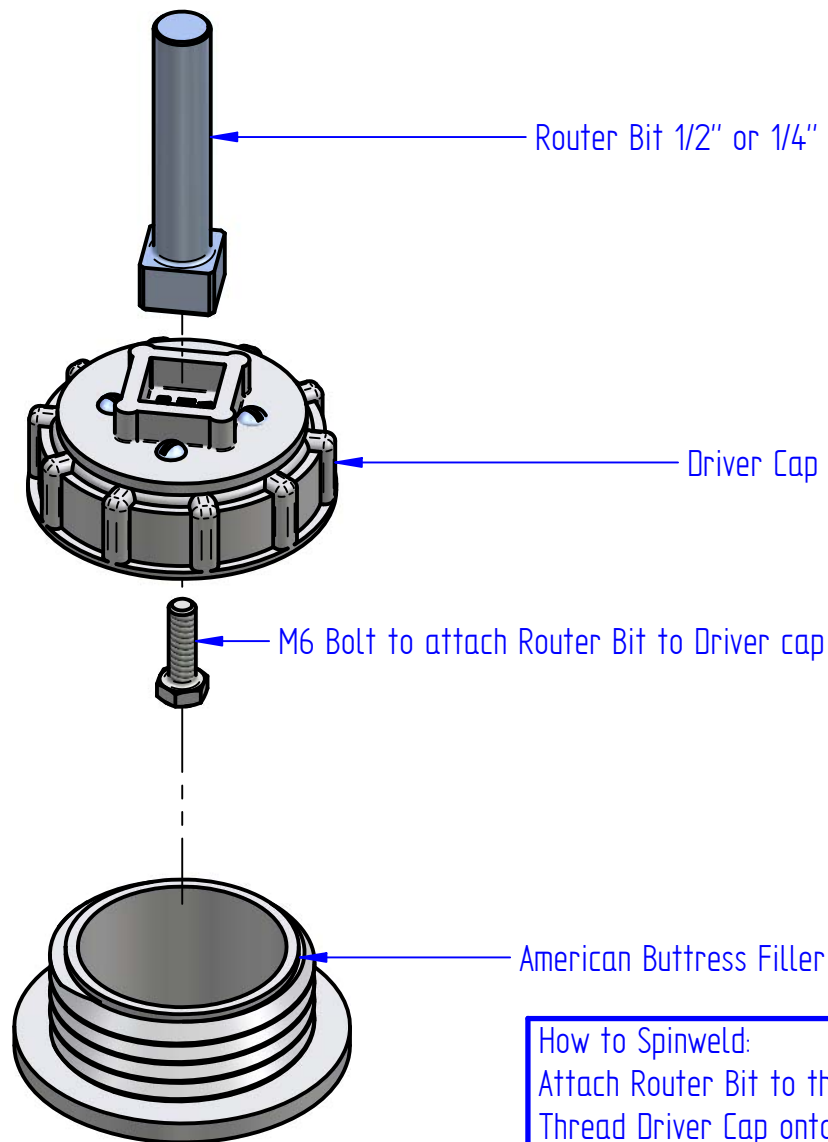
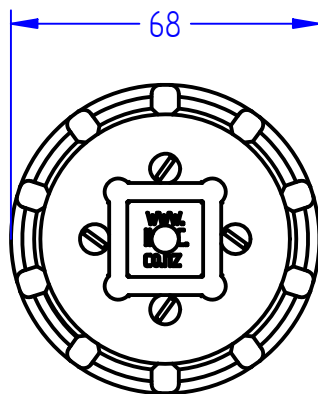
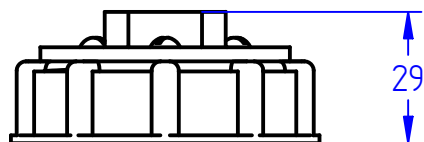
The American Buttress and cap come in two handy sizes 56mm and 88mm. The spigot fitting is a UV stable polyethelene can be a filler for tanks or an outlet for calf feeders. The special thread style ensures that the cap seals well even in inverted situations. The Nylon cap has excellent chemical resistance, is non-vented, and has an internal fixing point for a retaining chain.



Spinweld quick fit filler cap and driver will be needed with purchase.



Recommended hole saw size :
56mm Hole saw size 52mm
88mm Hole saw size 83mm



How to Spinweld:
 Attach Router Bit to the driver cap with M6 Bolt.
 Thread Driver Cap onto American Buttress Filler.
 Spinweld the part in.

Product name: Driver AB 56mm

Product code: XDAB56

COPYRIGHT RESERVED

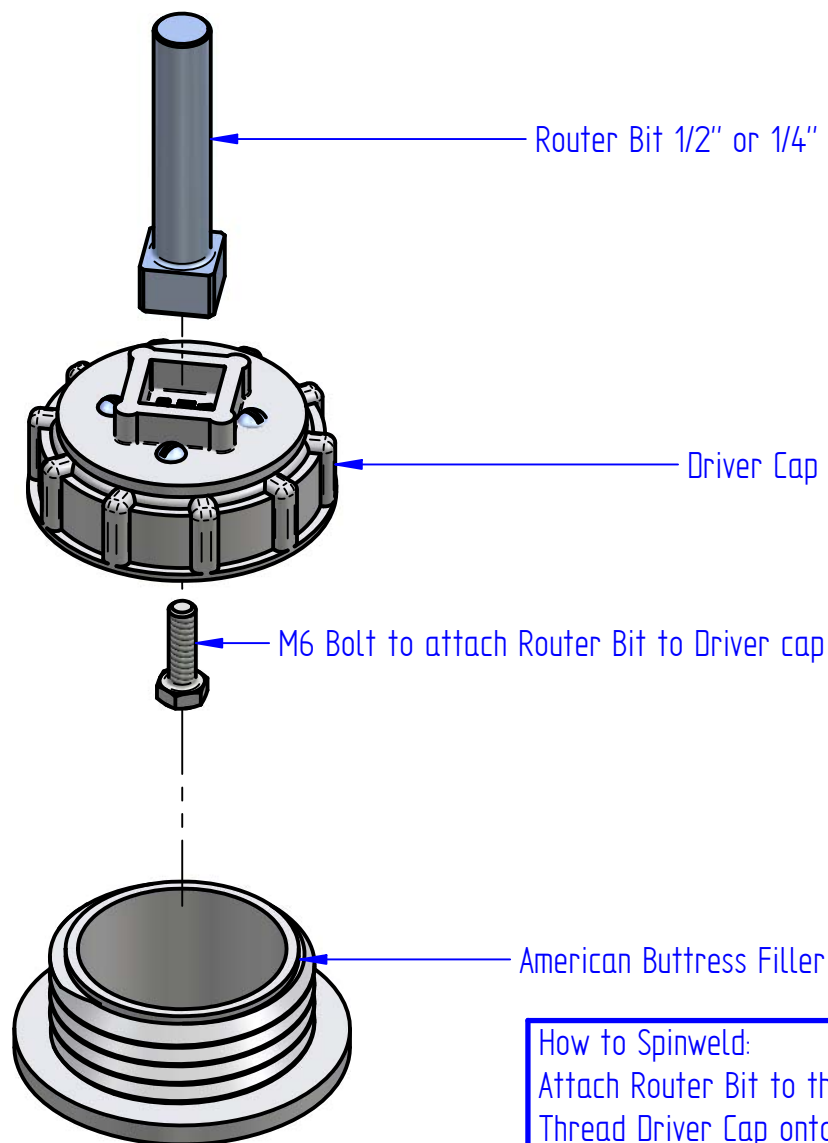
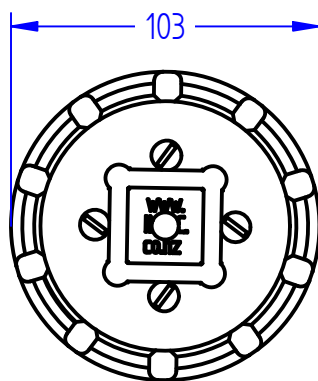
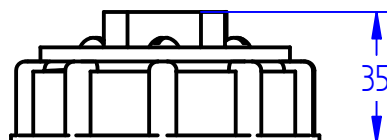
All dimensions and weights are nominal

FILE NAME: Driver AB 56mm.dft

INDAC
 INNOVATIVE DESIGN AND CONSTRUCTION

Box 378
 26 Stuart Street
 Blenheim, 7201

Phone: +64 3 578 3034
www.indac.co.nz
www.plasticproducts.co.nz



How to Spinweld:
 Attach Router Bit to the driver cap with M6 Bolt.
 Thread Driver Cap onto American Buttress Filler.
 Spinweld the part in.

Product name: Driver Cap American Buttress 88mm

Product code: XDAB88

COPYRIGHT RESERVED

All dimensions and weights are nominal

FILE NAME: Driver AB 88mm.dft

INDAC
 INNOVATIVE DESIGN AND CONSTRUCTION

Box 378
 26 Stuart Street
 Blenheim, 7201

Phone: +64 3 578 3034
www.indac.co.nz
www.plasticproducts.co.nz