

EMERGENCY BATTEN - Diffuser

FEATURE

- Cost-effective light-line solution for industrial, commercial and other applications;
- Flexible solution;
- Energy-saving and environmental protection.



SP210PSEM



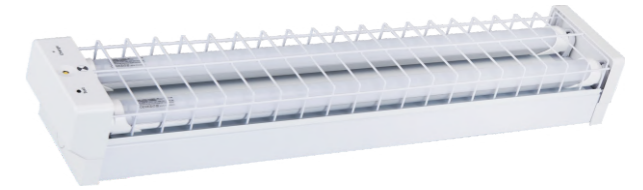
SP220PSEM

Item Code	SP210PSEM	SP220PSEM
Input Voltage	220-240V	220-240V
Frequency	50/60Hz	50/60Hz
Dimension	637*120*88mm	1247*120*88mm
Material	Metal+PS	Metal+PS
Operating Temp.	0-40 °C	0-40 °C
AC Stage LED Power	2*9W LED Tube	2*18W LED Tube
DC Stage Light Source	3W LED Chip (DC Wattage: 1.7W)	3W LED Chip (DC Wattage: 1.7W)
Battery	4.8V 1800mAH NI-MM	4.8V 1800mAH NI-MM
Charge Time	16 Hours	16 Hours
Discharge Time	2 Hours	2 Hours
Emergency Lumen	140lm	140lm
LED Lifespan	40,000 Hours	40,000 Hours
Work Mode	Maintain	Maintain
Installation	Surface Mounting	Surface Mounting
Indicator	Red-Charging	Red-Charging
Test	Manual Test Switch	Manual Test Switch
Connection	Terminal Block	Terminal Block
Protection	Over-Charge /Over-Discharge	Over-Charge /Over-Discharge
Classification	C0:D25,C90:D25	C0:D25,C90:D25
Standard	As2293 IEC60598-2-22	As2293 IEC60598-2-22

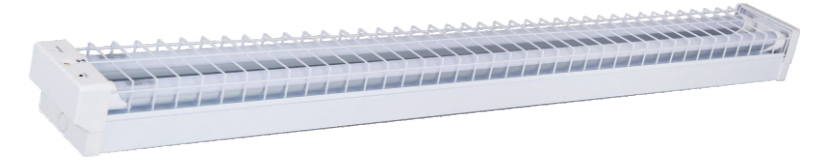
EMERGENCY BATTEN - Wire Guard

FEATURE

- Cost-effective light-line solution for industrial, commercial and other applications;
- Flexible solution;
- Energy-saving and environmental protection.



SP210WGEM



SP220WGEM

Item Code	SP210WGEM	SP220WGEM
Input Voltage	220-240V	220-240V
Frequency	50/60Hz	50/60Hz
Dimension	637*120*88mm	1247*120*88mm
Material	Metal+PS	Metal+PS
Operating Temp.	0-40 °C	0-40 °C
AC Stage LED Power	2*9W LED Tube	2*18W LED Tube
DC Stage Light Source	3W LED Chip (DC Wattage: 1.7W)	3W LED Chip (DC Wattage: 1.7W)
Battery	4.8V 1800mAH NI-MM	4.8V 1800mAH NI-MM
Charge Time	16 Hours	16 Hours
Discharge Time	2 Hours	2 Hours
Emergency Lumen	140lm	140lm
LED Lifespan	40,000 Hours	40,000 Hours
Work Mode	Maintain	Maintain
Installation	Surface Mounting	Surface Mounting
Indicator	Red-Charging	Red-Charging
Test	Manual Test Switch	Manual Test Switch
Connection	Terminal Block	Terminal Block
Protection	Over-Charge /Over-Discharge	Over-Charge /Over-Discharge
Classification	C0:D25,C90:D25	C0:D25,C90:D25
Standard	As2293 IEC60598-2-22	As2293 IEC60598-2-22

