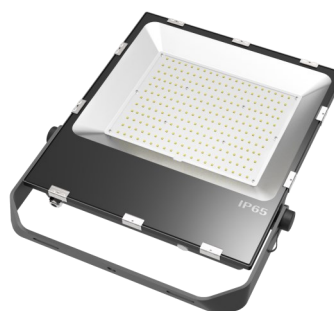


200W COMPACT SMD LED FLOOD

Product Features

- Tempered glass
- IP65 outdoor use
- No UV and IR radiation
- Adjustable bracket arm
- Die-cast Aluminium construction
- AC 100~277V wide Voltage input
- Made with LM-80 certified LED chips
- Long life-span with low power consumption



Technical Specification

Model	ULFL-200W-B
Watts	200W
LED Chip Qty	240pcs
Input Voltage	AC 240V
Power Factor	>0.95
Beam Angle	120°
Colour Temp.	6000K
CRI	Ra>80
Lumens Output	120lm/w
Size (mm)	360*400*53.5
IP Grade	IP65
Housing Colour	Black

