

NS-HP-GL User's Guide



Rev. 0.3
September 30, 2017

Table of Contents

1. INTRODUCTION	3
2. FEATURES OF NS-HP-GL.....	5
3. APPLICATIONS.....	5
4. PIN OUT DESCRIPTION	6
5. CHECK OUT BASIC GPS FUNCTIONALITY.....	8
6. SET UP NS-HP-GL AS RTK BASE	12
Known Base Antenna Position	13
Unknown Base Antenna Position.....	14
Base Stream Format.....	16
7. USE NS-HP-GL AS RTK ROVER	18
RTK reference static started position	23
8. FLOAT RTK MODE	24
9. MOVING BASE MODE.....	26
10. ADVANCED MOVING BASE MODE	28
11. RTK POST PROCESSING.....	29
12. ACTIVE ANTENNA CONSIDERATION.....	30
13. FIRMWARE UPDATE	31
14. POSSIBLE CONNECTION FOR QUADCOPTER APPLICATION	35
15. FAQ.....	37

1. INTRODUCTION

NS-HP-GL is a high performance RTK capable GNSS receiver. At 1Hz update rate, NS-HP-GL can accept RTCM 3.x message or SkyTraQ carrier phase raw measurement data from a base station to perform carrier phase RTK processing, achieving centimeter-level accuracy relative positioning. At higher 2 / 4 / 5 / 8 / 10 / 20 Hz update rate, NS-HP-GL functions as a high-performance GNSS receiver with conventional meter-level accuracy.

NS-HP-GL-5 and NS-HP-GL-10 models support RTK update rate up to 5Hz and 10Hz.

For UAV aerial survey applications that require camera shutter trigger signal synchronized precision time & position stamp, NS-HP-GL-5S and NS-HP-GL-10S provide precise time having better than 100nsec accuracy, and precise position having maximum error less than 1 millisecond traveled distance on top of RTK 1cm + 1ppm positioning error; i.e. if 50km/h speed then maximum 1.4cm error on top of RTK 1cm + 1ppm positioning error.

NS-HP-GL Models:

Models	RTK Maximum Update Rate			Precision Time/Position Stamp
	1Hz	5Hz	10Hz	
NS-HP-GL	X			
NS-HP-GL-5		X		
NS-HP-GL-5S		X		X
NS-HP-GL-10			X	
NS-HP-GL-10S			X	X

Model Suffix			-5	-10
Supported Update Rate (Hz)	RTK cm-level accuracy	1	1 / 2 / 4 / 5	1 / 2 / 4 / 5 / 8 / 10
	normal meter-level accuracy	2 / 4 / 5 / 8 / 10 / 20	8 / 10 / 20	20
	Moving base precision heading	1	1 / 2 / 4 / 5	1 / 2 / 4 / 5

When used with RTCM base station, the supported RTCM message types are:

Type 1002 – Extended L1-Only GPS RTK Observables

Type 1004 – Extended L1&L2 GPS RTK Observables

Type 1005 – Stationary RTK Reference Station ARP

Type 1006 – Stationary RTK Reference Station ARP with Antenna Height

Type 1074 – GPS MSM4

Type 1075 – GPS MSM5

Type 1076 – GPS MSM6

Type 1077 – GPS MSM7

Type 1084 – GLONASS MSM4 (only compatible with NS-HP-GL's output)

Type 1085 – GLONASS MSM5 (only compatible with NS-HP-GL's output)

Type 1086 – GLONASS MSM6 (only compatible with NS-HP-GL's output)

Type 1087 – GLONASS MSM7 (only compatible with NS-HP-GL's output)

Type 1104 – SBAS MSM4

Type 1105 – SBAS MSM5

Type 1106 – SBAS MSM6

Type 1107 – SBAS MSM7

Type 1114 – QZSS MSM4

Type 1115 – QZSS MSM5

Type 1116 – QZSS MSM6

Type 1117 – QZSS MSM7

For centimeter-level RTK accuracy, NS-HP-GL requires much better operating condition than conventional meter-level accuracy GPS receiver:

- * Baseline distance between base and rover should be under 10Km
- * Under open sky without interference
- * Signal level over 37dB/Hz
- * 7 or more satellites above 15 degree elevation angle with good satellite geometry

If above condition is not met, NS-HP-GL will not get centimeter-level accuracy RTK solution. Without base station data input, NS-HP-GL works like a normal GPS receiver.

When used with a RTCM 3.x RTK base station within 10Km operating range, one rover NS-HP-GL is needed. If one wishes to setup a local base station to work with rover, then two NS-HP-GL will be needed, one for base and another for rover.

Default NMEA output baud rate is 115200.

RTCM 3.x or SkyTraq raw measurement data input baud rate is 57600

When NS-HP-GL is configured as base, it can serve as base for NS-HP-GL, NS-HP-GL-5, NS-HP-GL-10 rovers. When changing NS-HP-GL to base mode, baud rate need to change to 57600 to work with other NS-HP-GL rovers.

2. FEATURES OF NS-HP-GL

RTK Receiver Features

- * Support RTK base and rover modes
- * L1 C/A Code
- * 16 channel GPS/SBAS/QZSS + 12 channel GLONASS
- * RTK position accuracy: centimeter-level
- * 70mA @ 3.3V

GNSS Receiver Features

- * L1 C/A Code
- * 16 channel GPS/SBAS/QZSS + 12 channel GLONASS
- * Sensitivity: -148dBm cold starting, -160dBm tracking
- * Cold start time to first fix: 29 second
- * Hot start time to first fix: 1 second
- * Position accuracy: 2.5m CEP
- * Velocity accuracy: 0.1m/sec
- * Timing accuracy: 10nsec
- * Maximum 20Hz update rate
- * 50mA @ 3.3V

- * 1Hz carrier phase raw measurement output on TX3 pin
- * 40mm x 38mm compact size

3. APPLICATIONS

Having superior precision positioning RTK capability, besides conventional GPS applications, NS-HP-GL may also be used for:

1. Centimeter-level accuracy Bluetooth RTK receiver for smartphones and tablets
2. Precise position tracking of race cars and athletes for performance measurement
3. Precision farming machine guidance
4. Precision grass cutting machine guidance
5. Precision guidance of unmanned aerial vehicles
6. Aerial survey precision position stamping without needing ground control points

4. PIN OUT DESCRIPTION



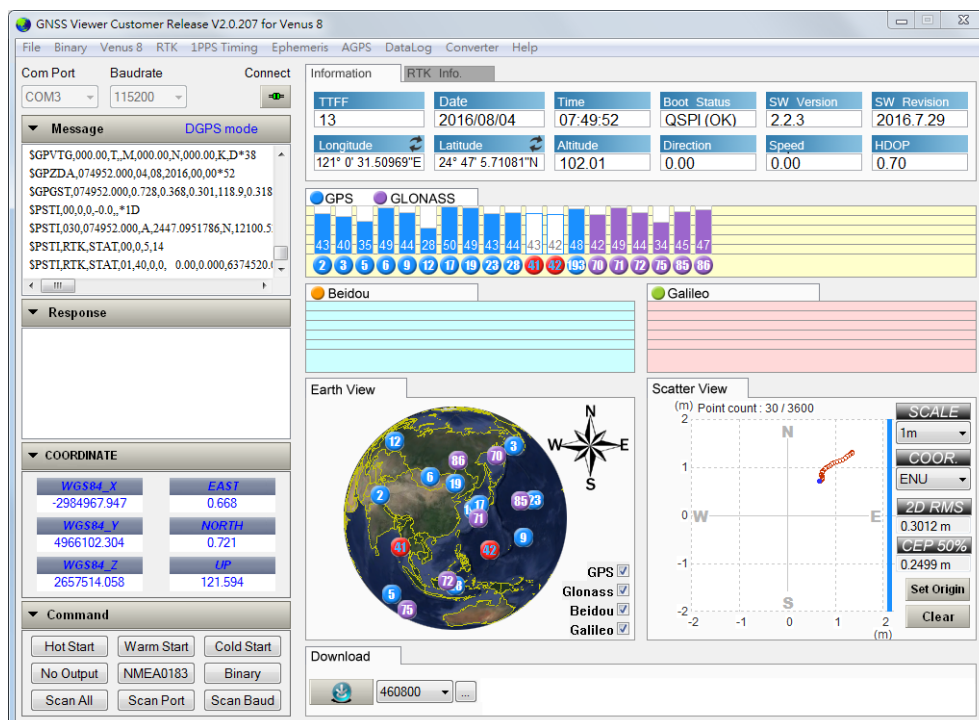
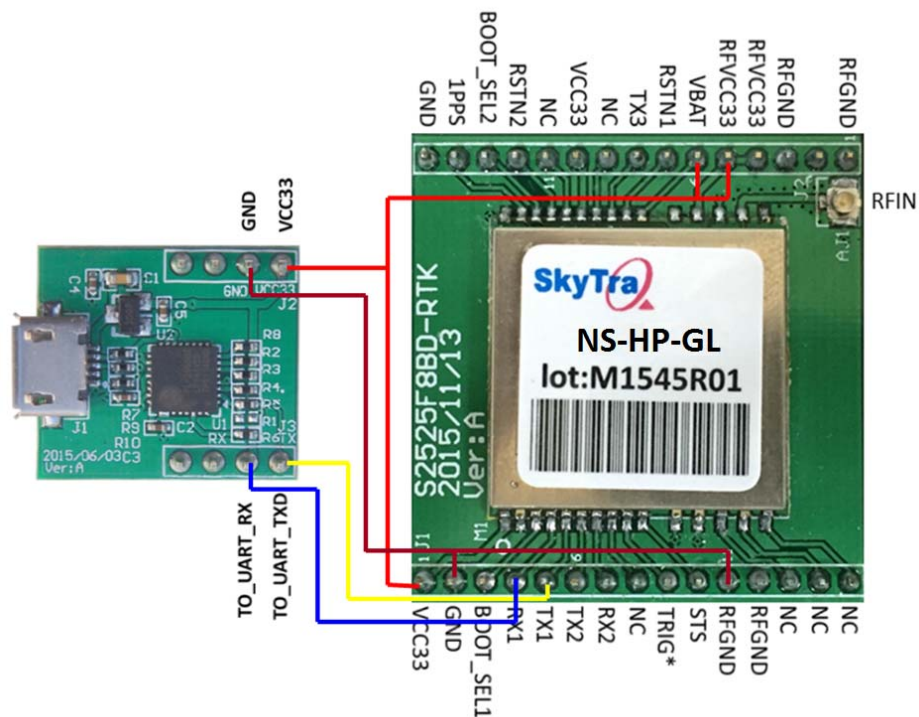
Pin Name	Description
VCC33	Digital section power supply input, 3.3V DC
GND	Digital ground
BOOT_SEL1	Input pin, 3.3V LVTTTL. No connection for normal use. Pull-low for loading firmware into empty or corrupted Flash memory from ROM mode for the master microcontroller.
RX1	UART serial data input, 3.3V LVTTTL. Used for sending commands or information to the receiver in SkyTraq binary protocol.
TX1	UART serial data output, 3.3V LVTTTL. Used for sending position, time and velocity information from the receiver in NMEA-0183 format.
TX2	UART serial data output, 3.3V LVTTTL. Currently no used.
RX2	UART serial data input, 3.3V LVTTTL. Used for sending RTCM 3.x data or SkyTraq raw measurement data to the receiver.
NC	No connection, empty pin
TRIG*	Input pin, 3.3V LVTTTL. External trigger input for camera shutter synchronized precision time and position stamping.

STS	<p>Position fix status indicator output, active low, 3.3V LVTTTL.</p> <p>No position solution: output HIGH</p> <p>DGPS or 3D solution: output LOW 2sec, HIGH 2sec</p> <p>RTK float solution: output INTEGER(ratio / 0.5) + 1 pulses, each pulse LOW for 0.25sec, HIGH for 0.25sec, ending with HIGH for 1sec. When connected to LED + 370-ohm resistor to 3.3V, the pulse count gives an idea of the RTK ratio value without needing GNSS Viewer running on a notebook.</p> <p>RTK fix solution: output LOW</p>
RFGND	RF ground
RFIN	<p>RF signal input connects to antenna.</p> <p>3.2V active antenna bias on RFIN.</p>
RFVCC33	RF section power supply, 3.3V DC
VBAT	Backup supply voltage for internal RTC and backup SRAM, 2.5V ~ 3.6V. VBAT must be applied whenever VCC33 is applied. This pin can be powered continuously to minimize the startup time. If VCC33 and VBAT are both removed, the receiver will be in factory default mode upon power up, all user configuration set to SRAM is lost; settings set to SRAM+Flash will remain effective. For applications the does not care cold starting every time, this pin can be connect to VCC33.
RSTN1	<p>External active-low reset input to the master microcontroller, 3.3V LVTTTL.</p> <p>Only needed when power supply rise time is very slow or software controlled reset is desired.</p>
TX3	<p>UART serial data output, 3.3V LVTTTL.</p> <p>Output 1Hz carrier phase raw measurement data at 115200</p>
RSTN2	<p>External active-low reset input to the slave microcontroller, 3.3V LVTTTL</p> <p>Only needed when power supply rise time is very slow or software controlled reset is desired.</p>
BOOT_SEL2	<p>Input pin, 3.3V LVTTTL.</p> <p>No connection for normal use. Pull-low for loading firmware into empty or corrupted Flash memory from ROM mode for the slave microcontroller.</p>
1PPS	One-pulse-per-second (1PPS) time mark output, 3.3V LVTTTL. The rising edge synchronized to UTC second when getting 3D position fix. The pulse duration is about 800usec at rate of 1 Hz.
GND	Digital ground

* Available only for NS-HP-GL-5S and NS-HP-GL -10S, 5Hz and 10Hz version with precision time/position stamping feature.

5. CHECK OUT BASIC GPS FUNCTIONALITY

Hook up as below, connect to an UART-to-USB bridge breakout board, connect antenna to RFIN, and place antenna at a location having clear sky view. After driver for the UART-to-USB bridge chip has been installed, select proper COM port and 115200 baud rate on GNSS Viewer, click CLOSE, GNSS Viewer will show signal being acquired and tracked.

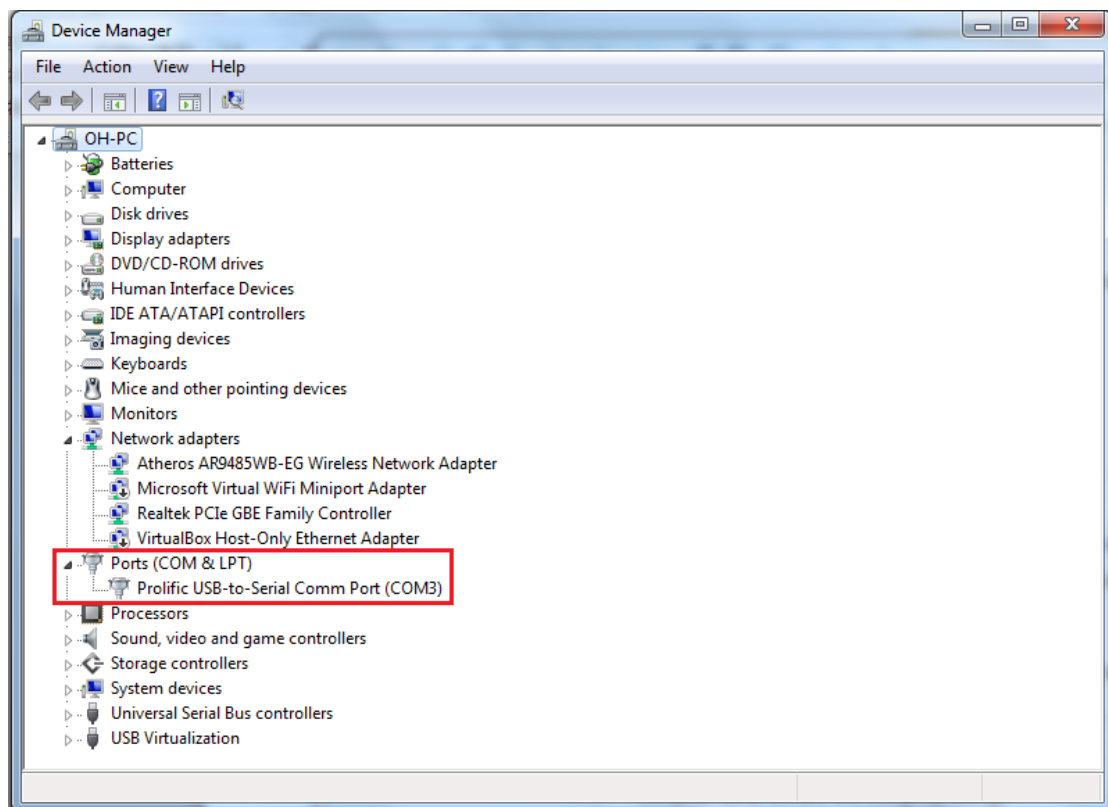


GNSS Viewer for Windows PC can be downloaded from:

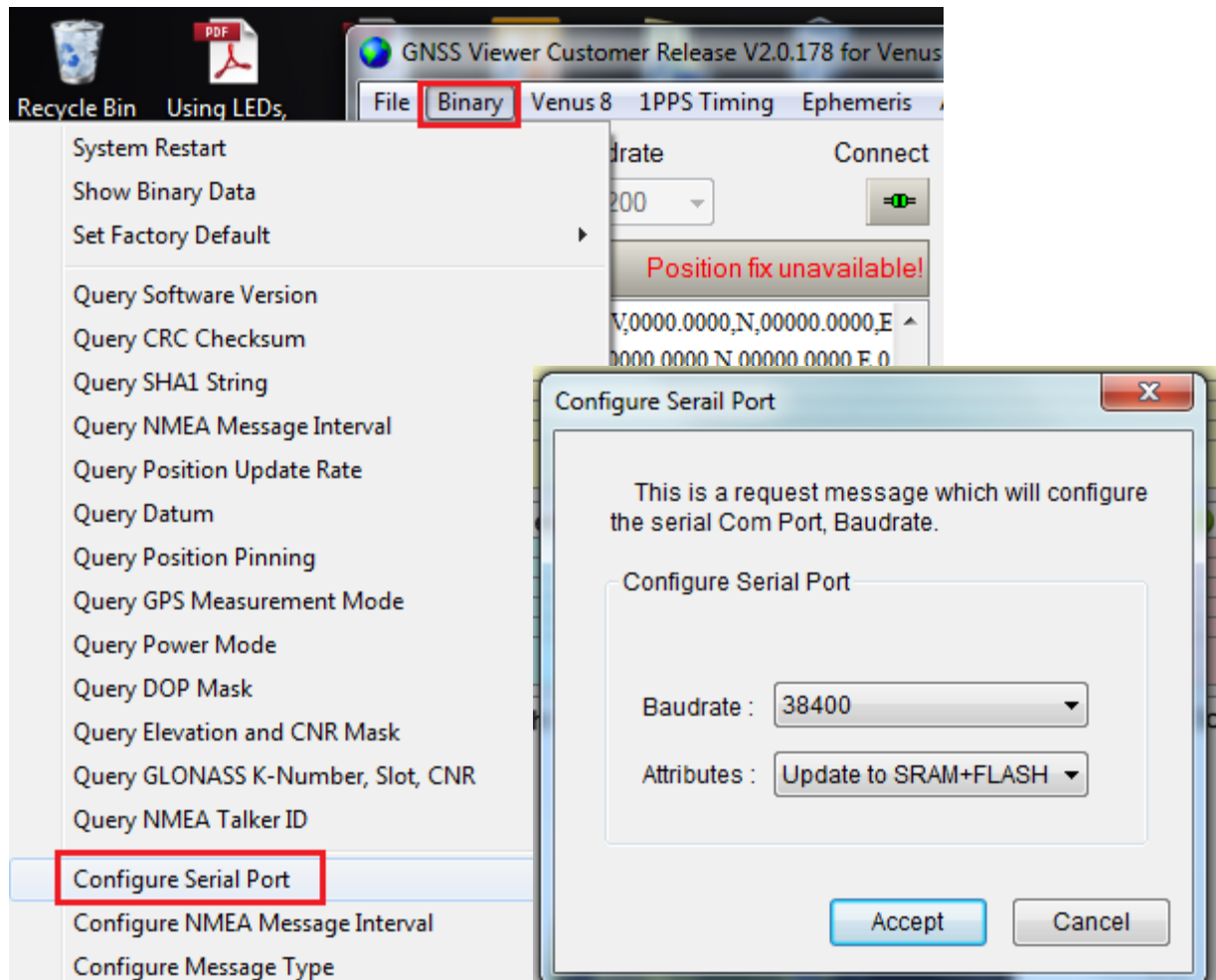
http://navspark.mybigcommerce.com/content/GNSS_Viewer.zip

<http://navspark.mybigcommerce.com/content/GNSS-Viewer-User-Guide.rev0.2.pdf>

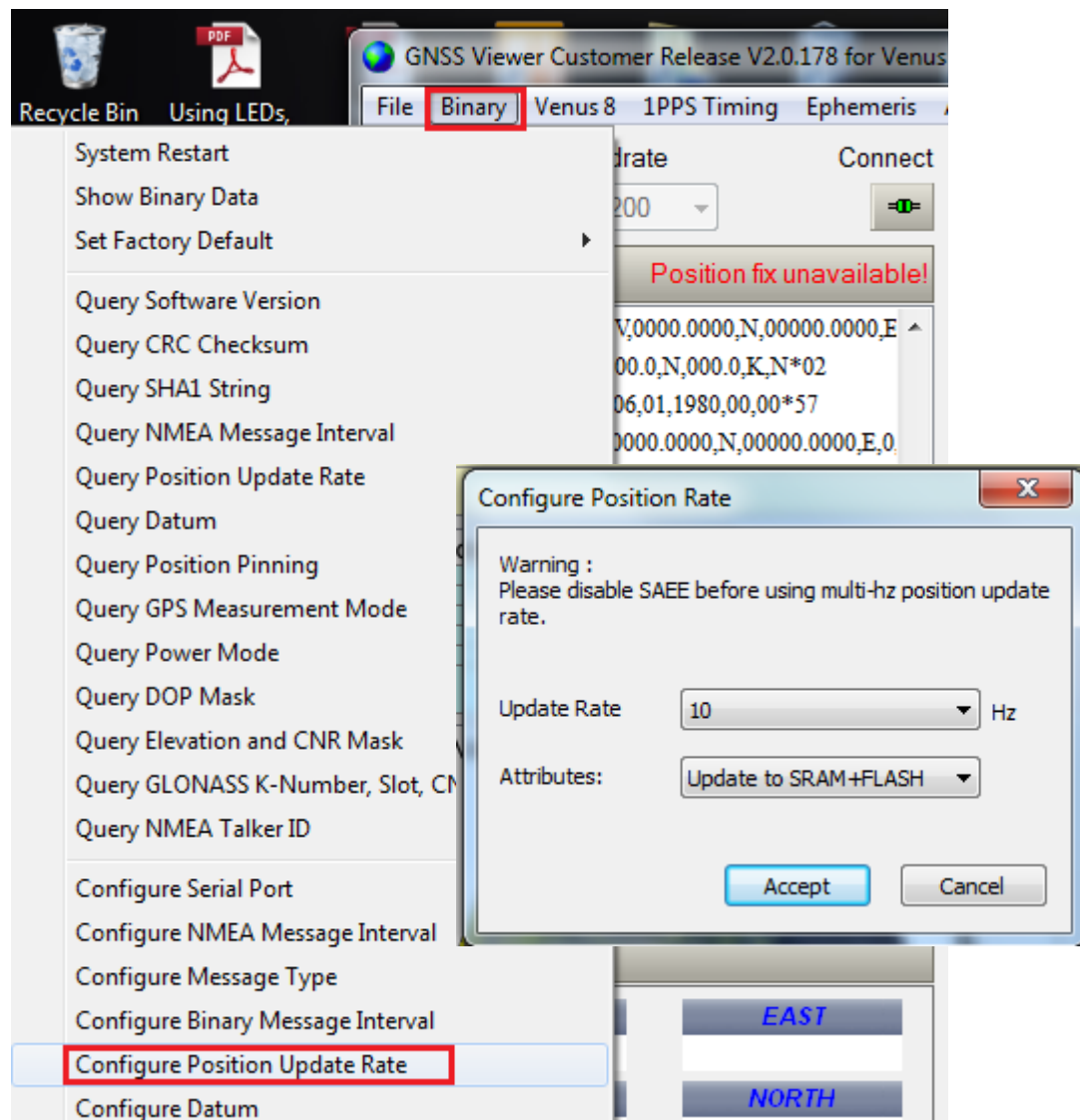
If uncertain of the COM port, it can be found from the Windows Device Manager.



If wishing to change NMEA output baud rate, from Binary pull-down menu select Configure Serial Port, select desired baud rate and Update to SRAM+Flash.



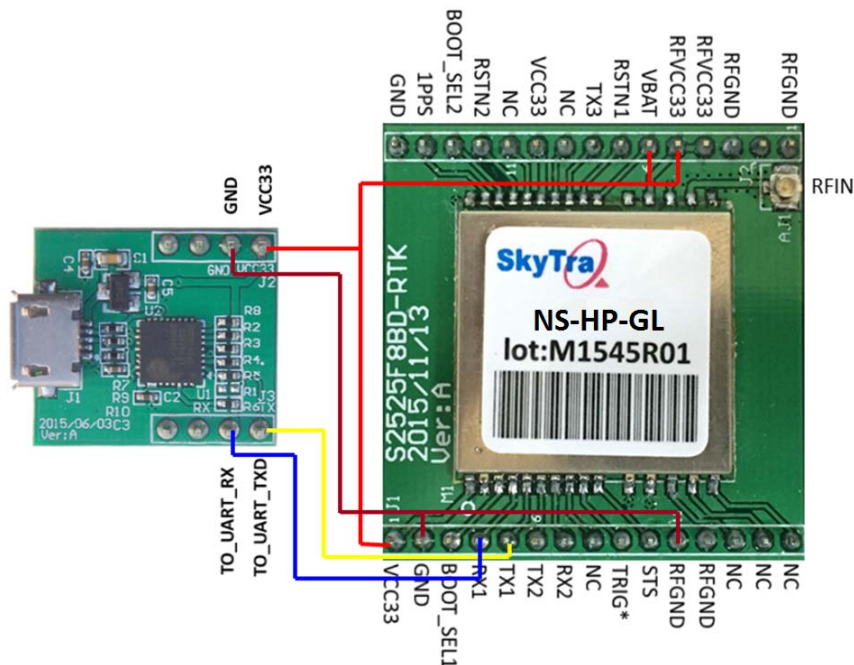
If wishing to change NMEA solution output updated rate, from Binary pull-down menu select Configure Position Update Rate, select desired update rate and Update to SRAM+Flash.



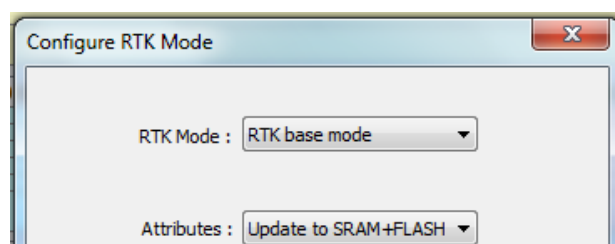
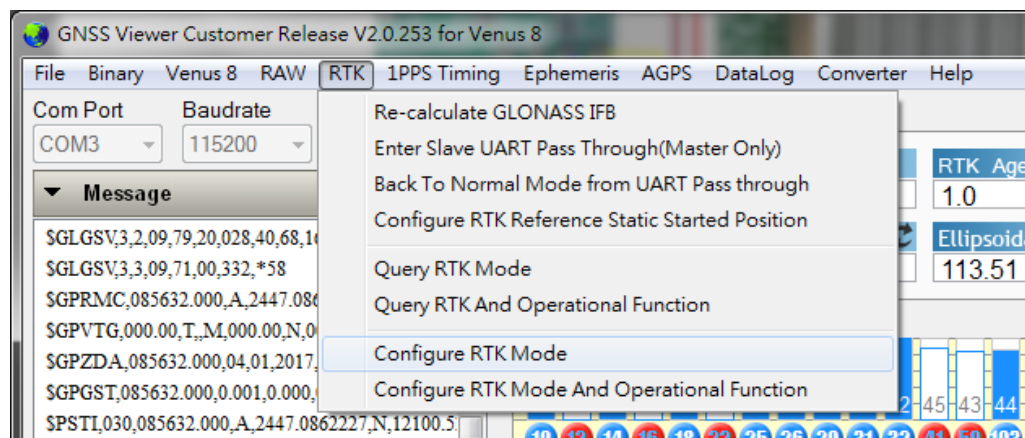
When changing to higher update rate, make sure baud rate in use can accommodate it. If baud rate is not fast enough, NMEA message output will be truncated.

6. SET UP NS-HP-GL AS RTK BASE

Hook up as below; connect to an UART-to-USB bridge breakout board for connecting to GNSS Viewer running on a Windows PC.



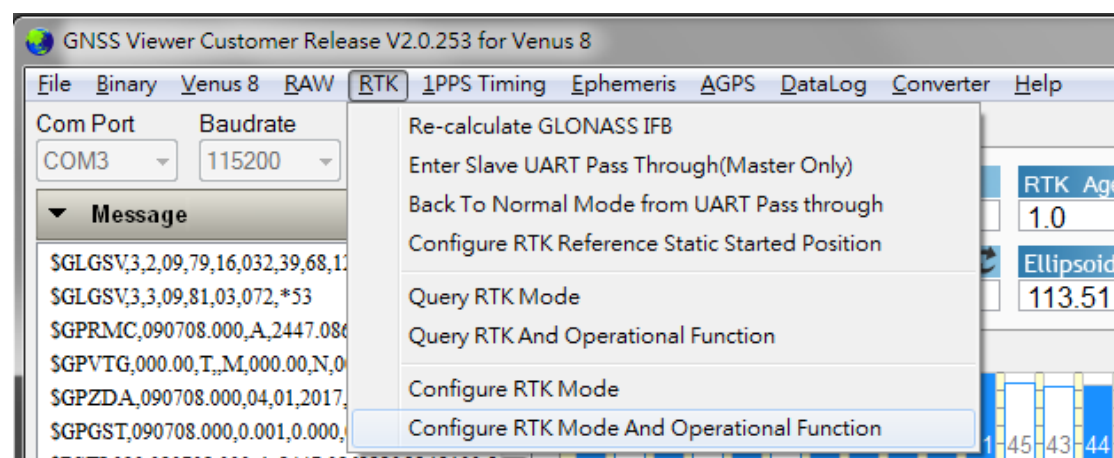
From GNSS Viewer RTK pull down menu, select Configure RTK Mode, select RTK base mode and update to SRAM+Flash.



Known Base Antenna Position

When configured as base, NS-HP-GL will output its position along with carrier phase raw measurement data over UART TX1. If base NS-HP-GL antenna will be placed at a location with known position, the position information can be set into NS-HP-GL using GNSS Viewer.

From RTK pull-down menu, select Configure RTK Mode And Operational Function, select RTK base mode, select Static Mode and enter antenna latitude/longitude in degrees and ellipsoidal height in meter, update to SRAM+Flash.



Configure RTK Mode and Operational Function

RTK Mode :

Receiver A \ Receiver B		RTK rover mode		RTK precisely kinematic base mode
		Normal/Float	Moving Base	Normal/Float
RTK base mode	Kinematic		✓	
	Survey/Static	✓		✓
RTK precisely kinematic base mode	Normal/Float		✓	

RTK Base Position Mode :

Latitude :

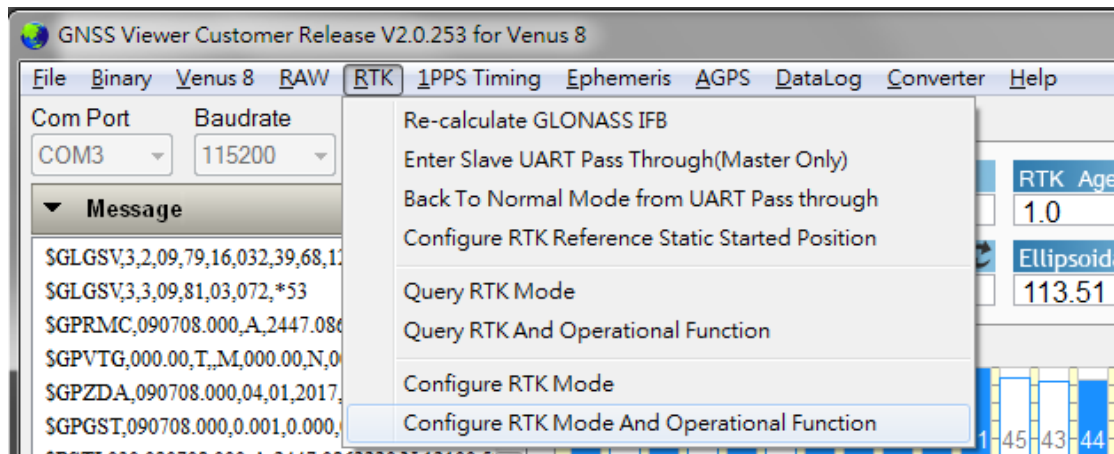
Longitude :

Ellipsoidal Height :

Attributes :

Unknown Base Antenna Position

If base antenna position is unknown, set to let it survey for 60sec upon power up. From GNSS Viewer RTK pull-down menu, select Configure RTK Mode And Operational Function, select Survey Mode and set Survey Length to 60 and Update to SRAM+Flash.



Configure RTK Mode and Operational Function

RTK Mode : RTK base mode

Receiver A \ Receiver B		RTK rover mode		RTK precisely kinematic base mode
		Normal/Float	Moving Base	Normal/Float
RTK base mode	Kinematic		✓	
	Survey/Static	✓		✓
RTK precisely kinematic base mode	Normal/Float		✓	

RTK Base Position Mode : Survey Mode

Survey Length (60~1209600) : 60

Standard Deviation(3~100) : 30

Attributes : Update to SRAM+FLASH

To use the base at some fixed location, use these steps to self-survey and retrieve surveyed antenna position, then set the antenna position into the base NS-HP-GL. No need to set the antenna position into base NS-HP-GL if only testing and becoming acquainted with it.

Once base NS-HP-GL has been properly configured, later usage require only connecting an antenna, apply power, and send TX1 base output data to the rover NS-HP-GL.

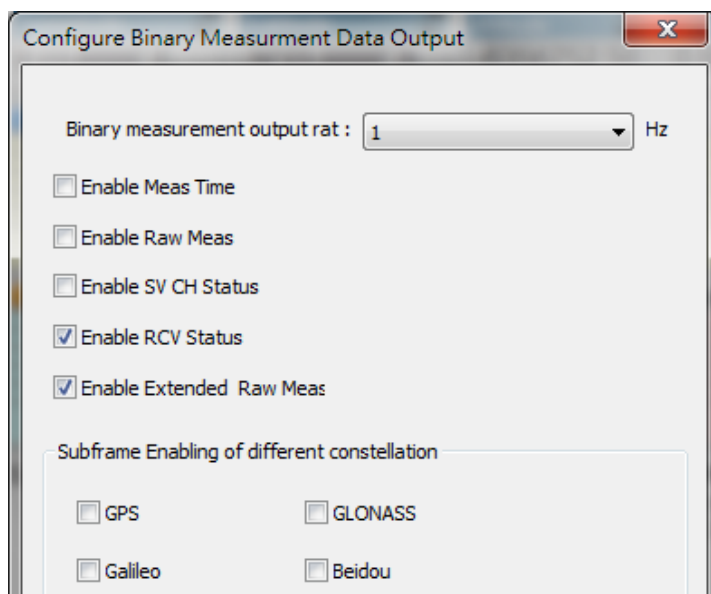
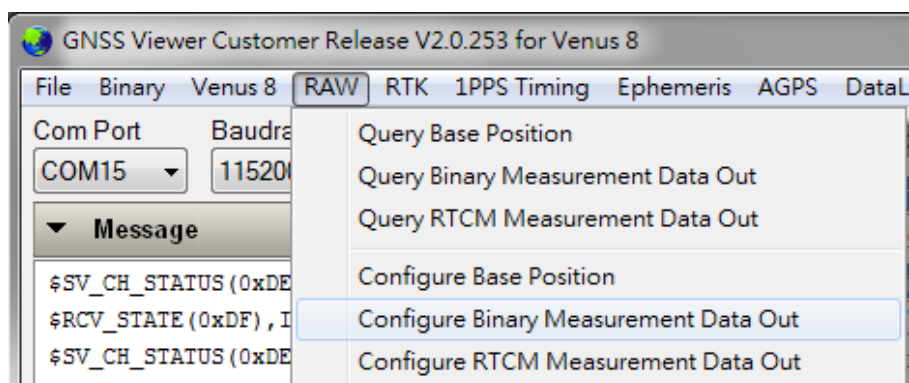


Base Stream Format

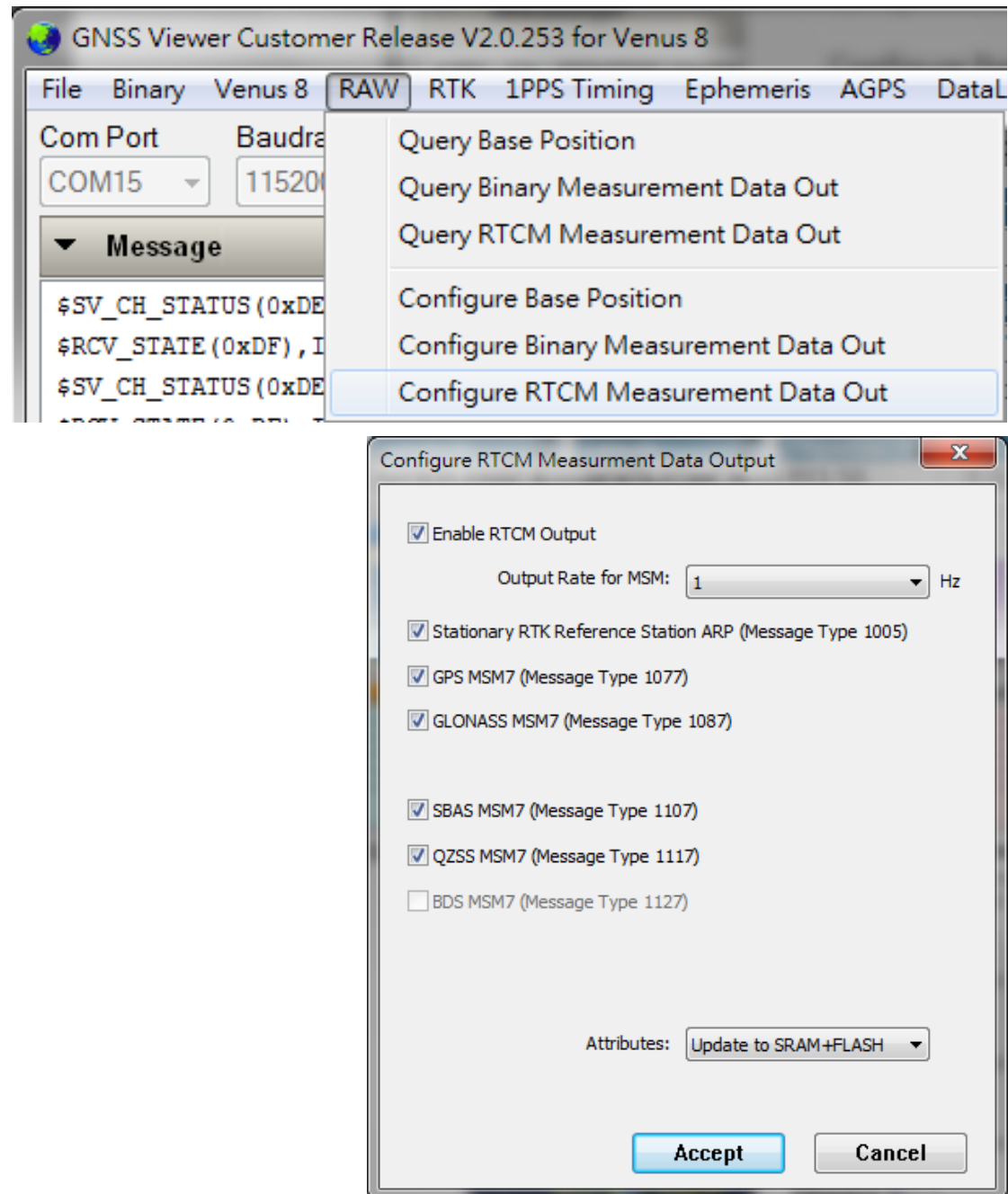
After configuring NS-HP-GL to RTK base mode, the default base stream outputs are packaged in SkyTraQ RAW measurement protocol. The outputted messages include:

- 1) Message type 0xDE – SV and Channel Status
- 2) Message type 0xDF – Receiver Navigation Status
- 3) Message type 0xE0 – GPS Subframe Data
- 4) Message type 0xE1 – GLONASS String Data
- 5) Message type 0xE5 – Extended RAW Measurement

The necessary message types of base stream used for NS-HP-GL RTK rover mode are only “Receiver Navigation Status (0xDF)” and “Extended RAW Measurement (0xE5)”. To decrease the throughput of base stream, other unnecessary message types can be disabled from the base stream. From GNSS Viewer RAW pull-down menu, select Configure Binary Measurement Data Out, disable unnecessary message types, select necessary message types and Update to SRAM+FLASH.



In addition to SkyTraq RAW measurement protocol, NS-HP-GL also supports RTCM 3 format output. From GNSS viewer RAW pull-down menu, select Configure RTCM Measurement Data Out, select Enable RTCM Output, select Stationary RTK Reference Station ARP , select MSM7s and Update to SRAM+FLASH.

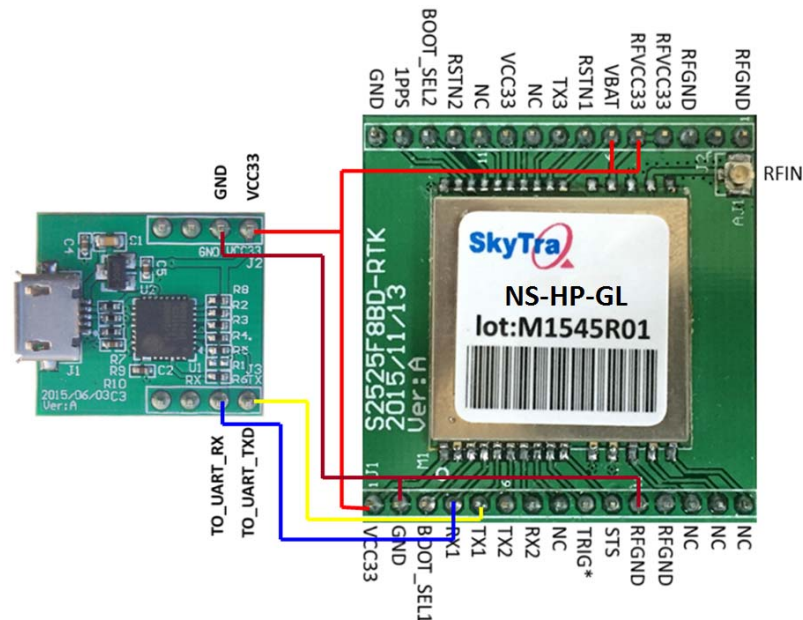


It's deserved to be mentioned:

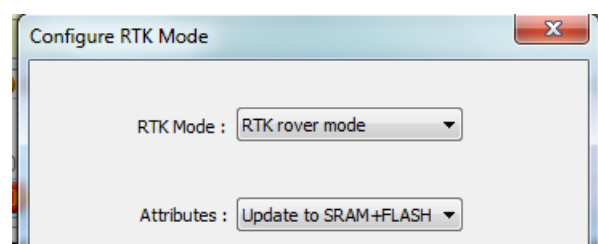
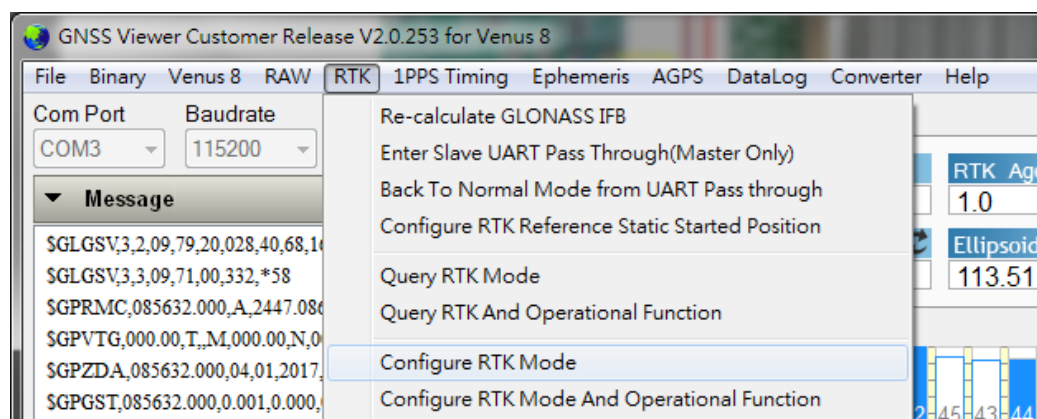
- 1) It's necessary to restart rover receiver if the format of base stream is changed.
- 2) The format of base stream must be configured to SkyTraq RAW measurement protocol if the operational function of NS-HP-GL RTK rover mode is moving base mode.

7. USE NS-HP-GL AS RTK ROVER

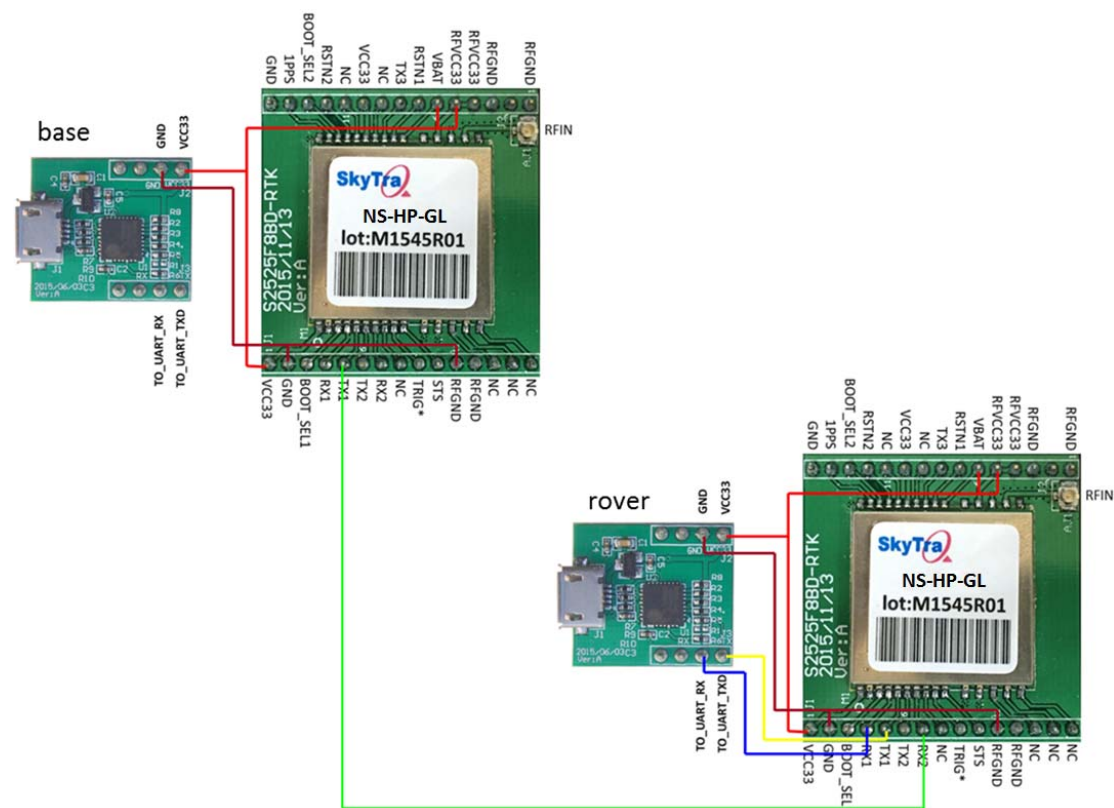
NS-HP-GL is configured as rover during production. If NS-HP-GL has been previously configured as base, to re-configure it as rover, hook up as below; connect to an UART-to-USB bridge breakout board for connecting to GNSS Viewer running on a Windows PC.



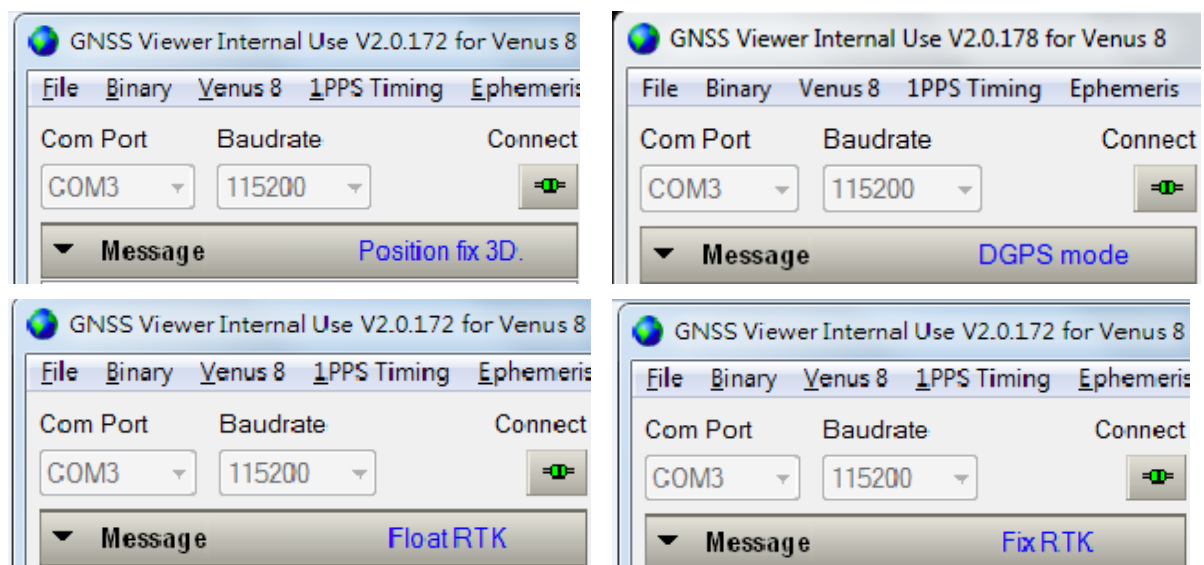
From GNSS Viewer RTK pull down menu, select Configure RTK Mode, select RTK rover mode and update to SRAM+Flash



To become acquainted with NS-HP-GL RTK rover operation, it's best to first use GNSS Viewer to monitor and interact with it. One possible setup scenario is as below.

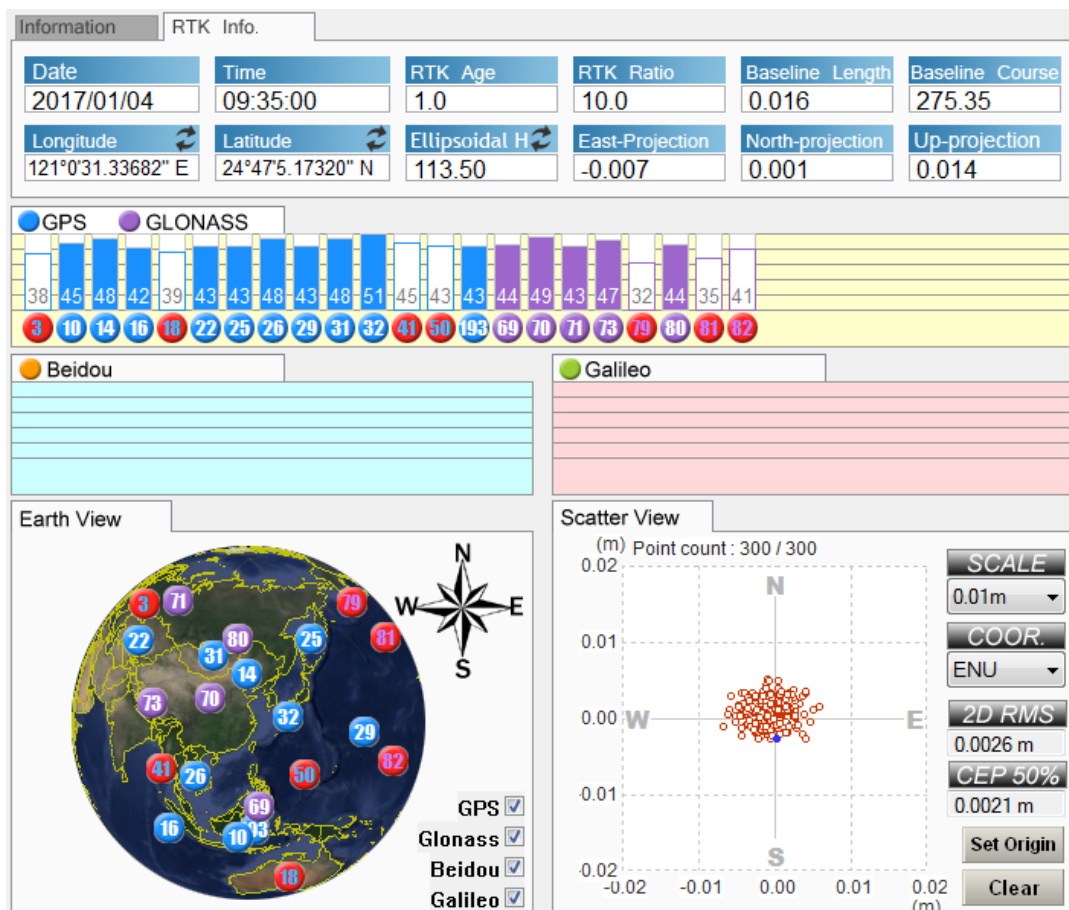


With two antennas connected and placed at location having clear sky view to receive GPS signal, base connected to laptop USB port for power, rover output NMEA data to GNSS Viewer, one should see rover state going from Position Fix 3D or DGPS mode, to Float RTK, to Fix RTK if earlier mentioned pre-conditions for RTK operation is met.



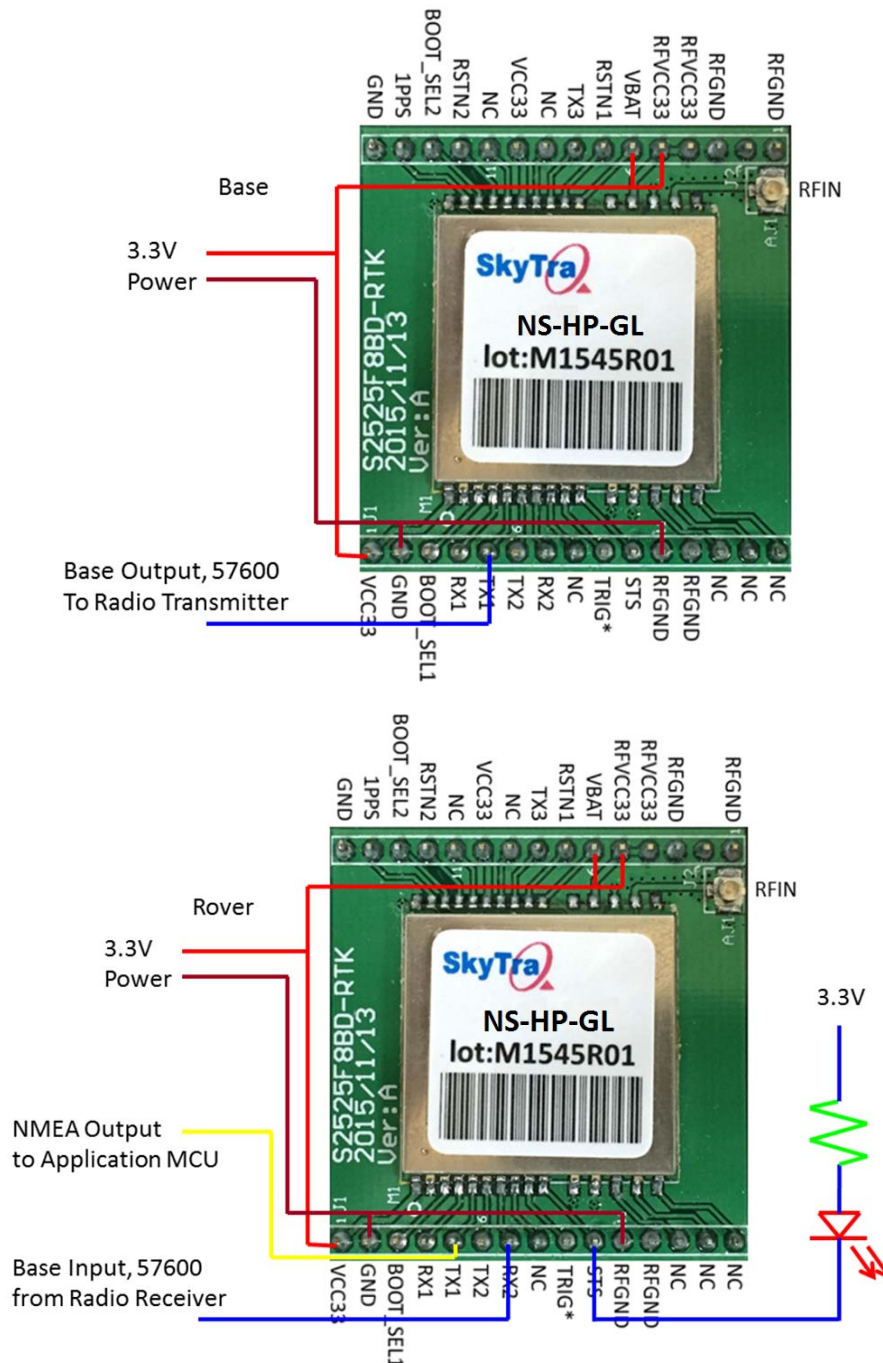
Number values (RTK Age, RTK Ratio, etc.) will be displayed on RTK Info label after Float RTK state is entered. When RTK Ratio number is over 3.0, receiver state changes to Fix RTK; below 3.0, receiver state shows Float RTK.

RTK Age indicates the lag delay in received base data. If RTK Age is 30 or more, indicating lag of 30 second or more, receiver state will show Position Fix 3D, NS-HP-GL will not try to compute RTK solution. Large RTK Age indicates some problem with transmission causing severe lag delay.



Although a minimum of 6 GPS satellites could result in Fix RTK solution during zero-baseline GPS simulator testing, 9 or more satellites spread across 4 quadrants of the sky is preferred in getting faster RTK fix with reliable result; lesser number of satellites will take longer time getting RTK fix and may sometimes have reported position decimeters off from true location.

Once becoming acquainted with NS-HP-GL RTK operation, one can replace base/rover wire connection with wireless radio connection to operate over distance as below shows. The rover NMEA output, besides sending to application microcontroller, can also be sent to a wireless transmitter for monitoring using GNSS Viewer on a laptop with wireless receiver; or a simple LED status indicator can be connected to monitor if in 3D/DGPS or Float RTK or Fix RTK state.



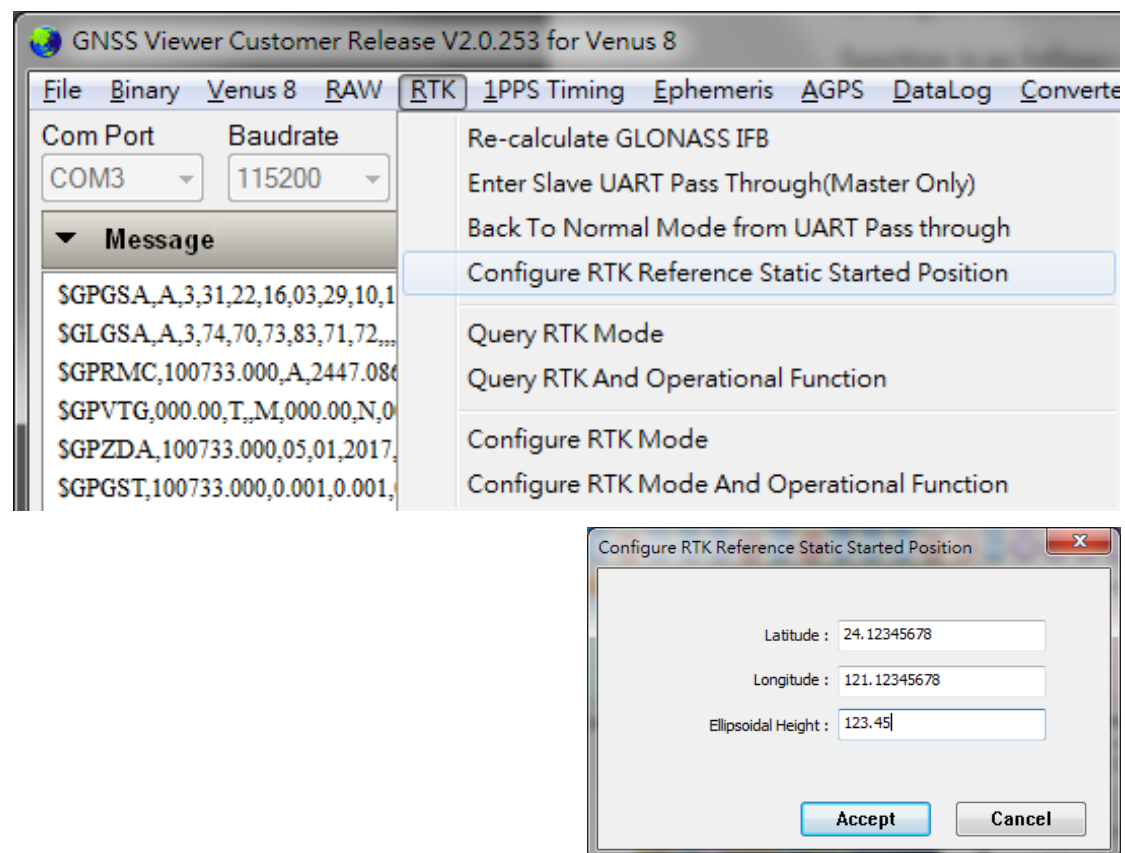
To use NS-HP-GL with Android smartphone or tablet, improving its GPS accuracy 100-fold to centimeter-level RTK for the Apps, a tutorial is available here:

<http://www.navsparkforum.com/viewtopic.php?f=37&t=306>

RTK reference static started position

For the user who always uses NS-HP-GL for working in a fixed area, NS-HP-GL provides a RTK reference static started position function to enter the accurately (decimeter-level) known coordinates of rover receiver position as initial condition. This function can improve the convergent time of getting RTK fix solution as long as entered coordinates are accurate enough. The usage of RTK reference static started position function is as follow:

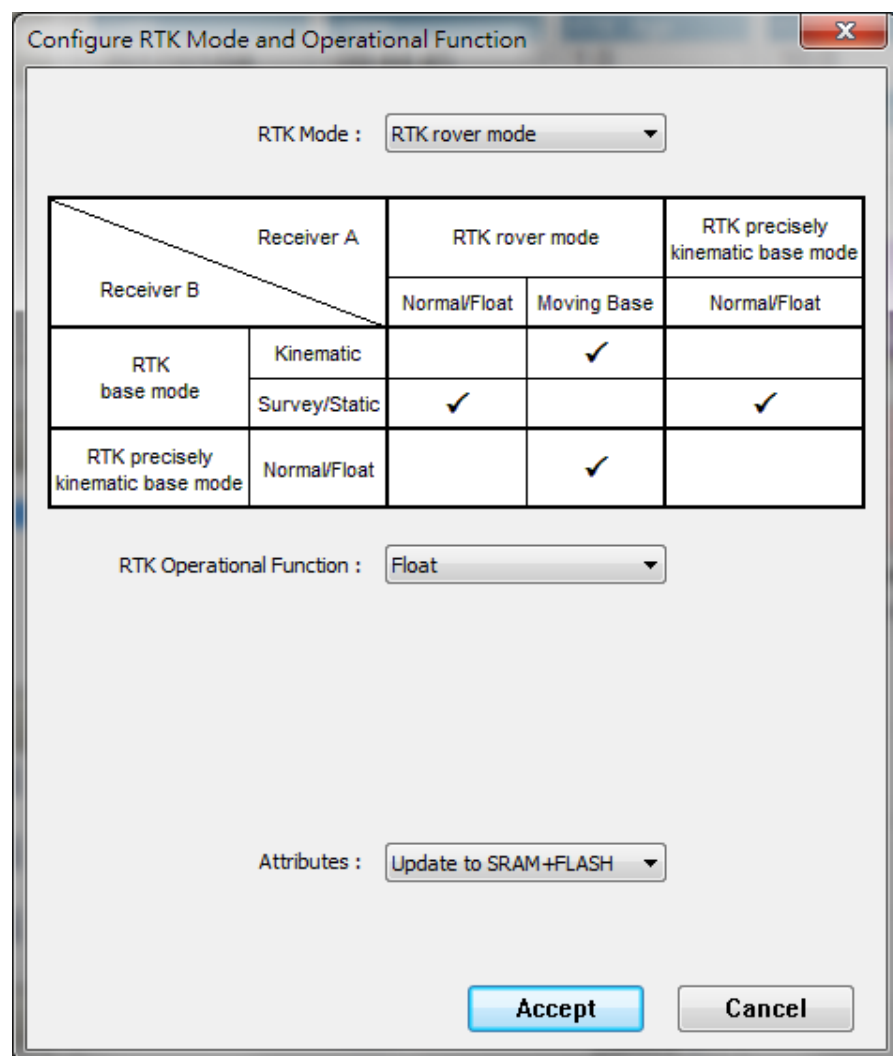
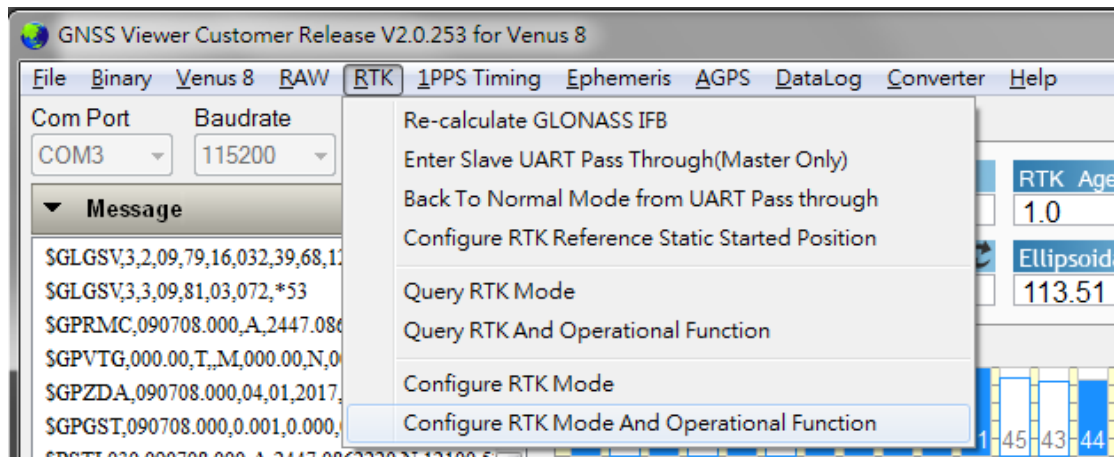
- 1) Set up rover and base receivers.
- 2) Locate rover antenna at the known position.
- 3) Wait rover receiver to get RTK float solution.
- 4) Configure the accurately known coordinates into RTK reference static started position function.
- 5) Keep the rover antenna in static for 30 seconds at least even if rover receiver has gotten RTK fix solution.
- 6) Check the correctness of entered coordinates and repeat step 2 to 5 if the RTK operational function is configured to Normal and rover receiver has not gotten RTK fix solution.
- 7) Start to use NS-HP-GL for applications.

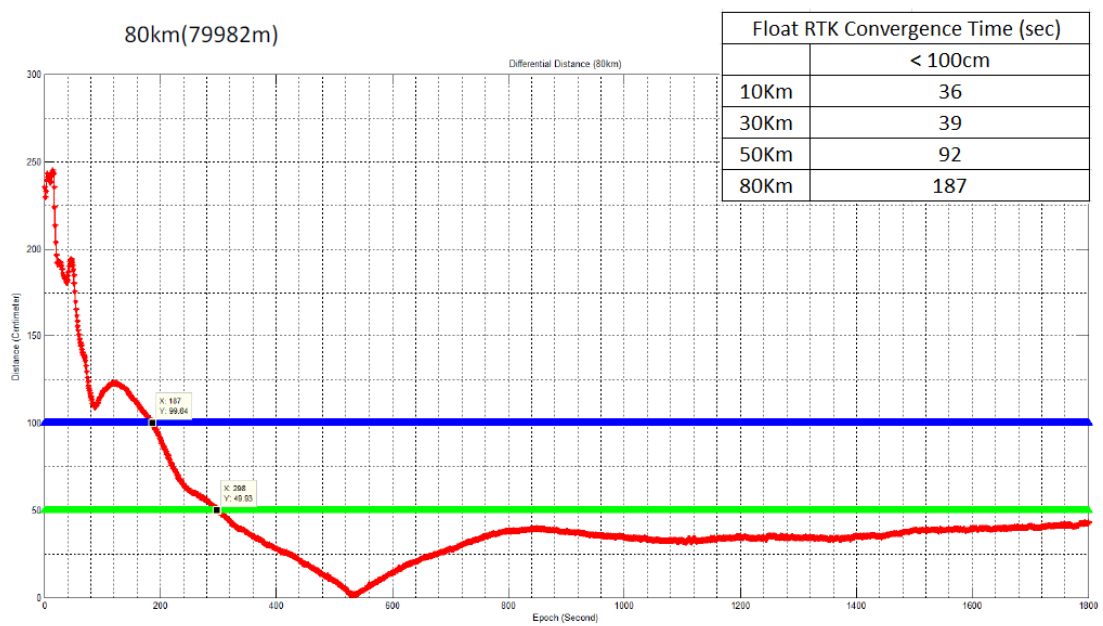
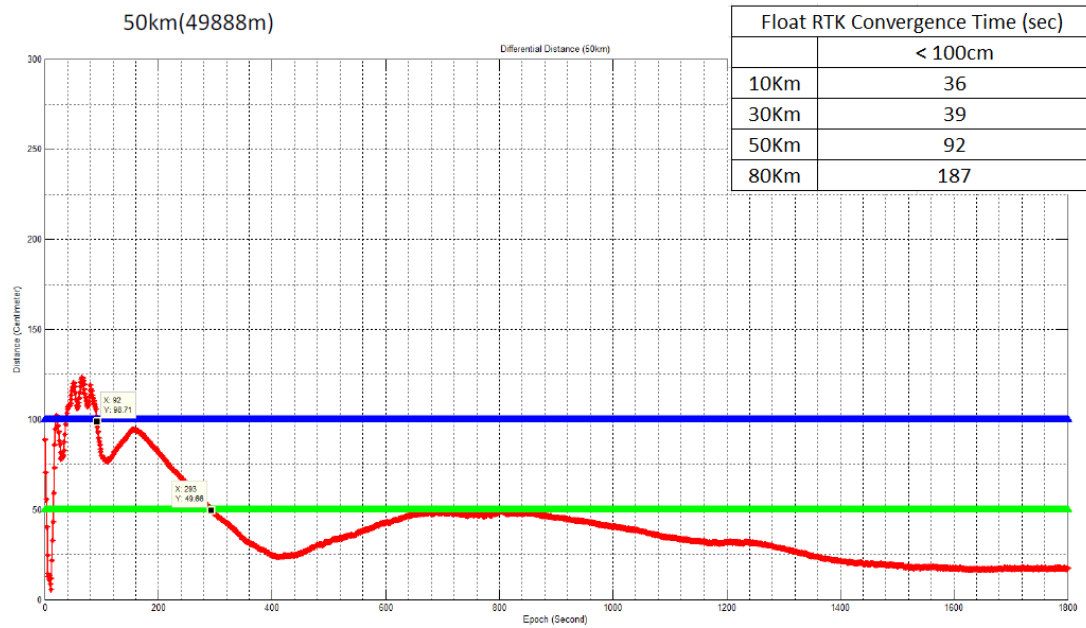


It's deserved to be mentioned that the RTK reference static started position function is not supported for the RTK operational function configured as Moving base mode.

8. FLOAT RTK MODE

In application environment where RTK fix is not possible and sub-meter or decimeter-level accuracy is sufficient, Float RTK mode can be selected.





9. MOVING BASE MODE

Normally GPS heading is derived from velocity; when GPS receiver is not moving, it could not have correct heading information. Moving base mode allows reporting of highly accurate heading direction, from base antenna to rover antenna, even when the antennas are static. PSTI,032 message output this heading and baseline information; see S2525F8-RTK datasheet for details.

The base needs to be set to Kinematic Mode and the rover needs to be set to Moving Base Mode. If the two antennas are at fixed distance from each other, the distance number can be entered as the baseline length information.

Configure RTK Mode and Operational Function

RTK Mode : RTK base mode

Receiver A \ Receiver B		RTK rover mode		RTK precisely kinematic base mode
		Normal/Float	Moving Base	Normal/Float
RTK base mode	Kinematic		✓	
	Survey/Static	✓		✓
RTK precisely kinematic base mode	Normal/Float		✓	

RTK Base Position Mode : Kinematic Mode

Configure RTK Mode and Operational Function

RTK Mode : RTK rover mode

Receiver A \ Receiver B		RTK rover mode		RTK precisely kinematic base mode
		Normal/Float	Moving Base	Normal/Float
RTK base mode	Kinematic		✓	
	Survey/Static	✓		✓
RTK precisely kinematic base mode	Normal/Float		✓	

RTK Operational Function : Moving base

Please enter a centimeter level accuracy values
Input 0 for unknown or variable.

Baseline length (meter) : 0.000000

RTK Mode	Remark
Normal & Float	* 1 / 2 / 4 / 5 / 8 / 10 Hz rover only require 1Hz base
	* NS-HP-GL-5S & NS-HP-GL-10S support STI,005 position stamp
Moving Base	* rover require matching update rate base
	* maximum 5Hz update rate
	* NS-HP-GL-5S & NS-HP-GL-10S does not support STI,005 position stamp in moving base mode

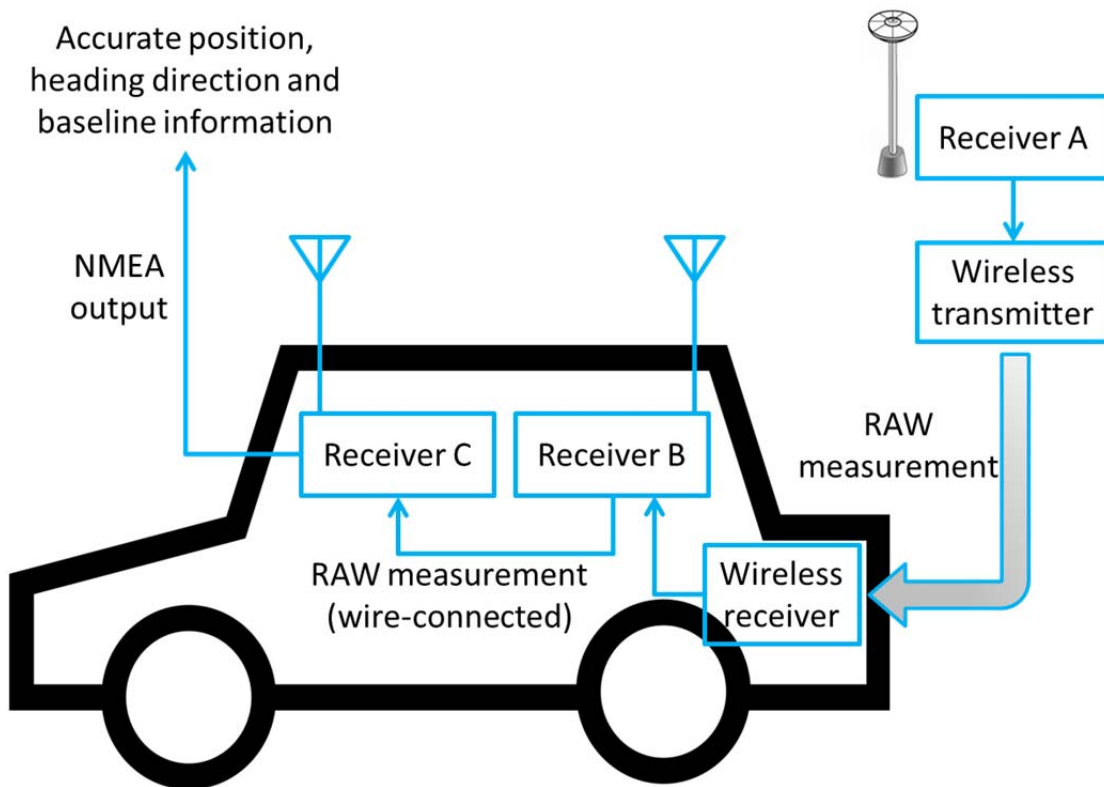
When setting NS-HP-GL-5, NS-HP-GL-5S, NS-HP-GL-10, NS-HP-GL-10S to base mode, the update rate is change to 1Hz. For 5Hz rover moving base operation, the base need to be set to 5Hz update rate.

It's deserved to be mentioned again, the format of base stream must be configured to SkyTraq RAW measurement protocol if the operational function of NS-HP-GL RTK rover mode is moving base mode.

10. ADVANCED MOVING BASE MODE

Advanced moving base mode allows reporting of highly accurate position, heading direction and baseline information. The heading direction reported by (advanced) moving base mode is the course between north direction and baseline vector (from base antenna to rover antenna) direction, so called azimuth. To get both highly accurate position and heading direction information, advanced moving base mode needs totally three receivers:

Receiver	RTK mode	RTK operational function
A	RTK base mode	Static/Survey
B	RTK precisely kinematic base mode	Normal/Float
C	RTK rover mode	Moving base



In the sub-system of receiver A and receiver B, receiver A and receiver B are used as base and rover receiver, respectively. However, receiver B does not only output NMEA but also carrier-phase RAW measurement because it is configured to RTK precisely kinematic base mode. Therefore, receiver B can also be used as base receiver for another rover receiver (the RTK operational function should be configured to moving base). In the sub-system of receiver B and receiver C, receiver B and receiver C are used as base and rover receiver, respectively.

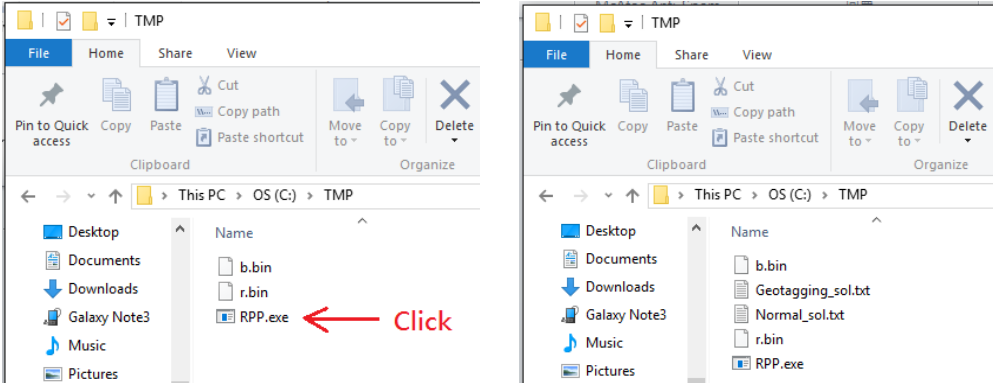
11. RTK POST PROCESSING

For NS-HP-GL-5S and NS-HP-GL-10S aerial mapping users wishing to post-process without the need of radio link sending base data to rover on the UAV, carrier phase raw measurements of base and rover can be logged separately and later processed by RPP.EXE, a Windows PC RTK Post-Process program.

After setting up base as described in section 6, carrier phase raw measurement can be logged using TX3 pin; raw measurement and antenna position are output on TX3 pin.

The rover needs to be set to base mode in order to output carrier phase raw measurement data; carrier phase raw measurement can be logged using TX3 pin. Update rate can be changed from default 1Hz of base mode.

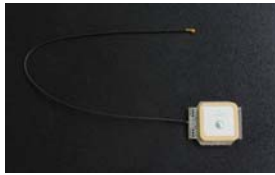
To use RPP.EXE, put both base and rover raw measurement files under the same directory. Rename base raw measurement file to b.bin; rename rover raw measurement file to r.bin; click to execute RPP.EXE; Normal_sol.txt and Geotagging_sol.txt files are generated. Normal_sol.txt contains date / time / position of the rover at regular interval. Geotagging_sol.txt contains TRIG pin generated date / time / position of the rover.



EPOCH	DATE	UTC	STATUS	AGE_OF_DIFF	RATIO	LAT	LONG	ALT	X	Y
2	2016/06/22	08:05:24.001	SINGLE	0.00	0.00	24.78479206	121.00871642	112.064	-2984963.388	4966101.865
4	2016/06/22	08:05:25.001	SINGLE	0.00	0.00	24.78479059	121.00871826	111.750	-2984963.435	4966101.584
6	2016/06/22	08:05:26.001	FLOAT	-1.00	2.99	24.78477030	121.00870472	113.492	-2984963.557	4966104.445
8	2016/06/22	08:05:27.001	FLOAT	-1.00	2.99	24.78477032	121.00870469	113.485	-2984963.556	4966104.447
10	2016/06/22	08:05:28.001	FIX	-1.00	6.57	24.78477033	121.00870468	113.486	-2984963.555	4966104.448
12	2016/06/22	08:05:29.001	FIX	-1.00	6.08	24.78477031	121.00870471	113.487	-2984963.559	4966104.448
14	2016/06/22	08:05:30.001	FIX	-1.00	5.72	24.78477033	121.00870471	113.482	-2984963.555	4966104.443
16	2016/06/22	08:05:31.001	FIX	-1.00	10.00	24.78477030	121.00870469	113.480	-2984963.557	4966104.451
18	2016/06/22	08:05:32.001	FIX	-1.00	10.00	24.78477033	121.00870470	113.485	-2984963.557	4966104.446
20	2016/06/22	08:05:33.001	FIX	-1.00	10.00	24.78477034	121.00870470	113.493	-2984963.556	4966104.445
22	2016/06/22	08:05:34.001	FIX	-1.00	10.00	24.78477034	121.00870471	113.479	-2984963.554	4966104.441
24	2016/06/22	08:05:35.001	FIX	-1.00	10.00	24.78477034	121.00870470	113.487	-2984963.557	4966104.448
26	2016/06/22	08:05:36.001	FIX	-1.00	10.00	24.78477033	121.00870470	113.480	-2984963.554	4966104.442
28	2016/06/22	08:05:37.001	FIX	-1.00	10.00	24.78477031	121.00870470	113.487	-2984963.558	4966104.448
30	2016/06/22	08:05:38.001	FIX	-1.00	10.00	24.78477033	121.00870471	113.479	-2984963.554	4966104.441
32	2016/06/22	08:05:39.001	FIX	-1.00	10.00	24.78477035	121.00870471	113.487	-2984963.557	4966104.447

12. ACTIVE ANTENNA CONSIDERATION

Embedded



External



Survey Grade



Helix



For RTK application, the active antenna must be able to provide signal over 37dB under open sky. Antennas vary in price, from under \$10 to over \$300; they mainly differ in interference rejection capability, multipath rejection capability, antenna phase center stability, and weight. Usually more expensive antenna claims to have superior interference and multipath rejection capability. Phase center of expensive survey grade antenna remains constant as the azimuth and elevation angle of the satellites change; signal reception is unaffected by the rotation of the antenna or satellite elevation. Helix antennas are expensive mostly due to light weight feature for UAV applications.

Under open sky no interference no multipath environments, performance difference between the wide price range of antennas may not be much. Depending on budget and application environment signal conditions, user can choose appropriate antenna for the required application.

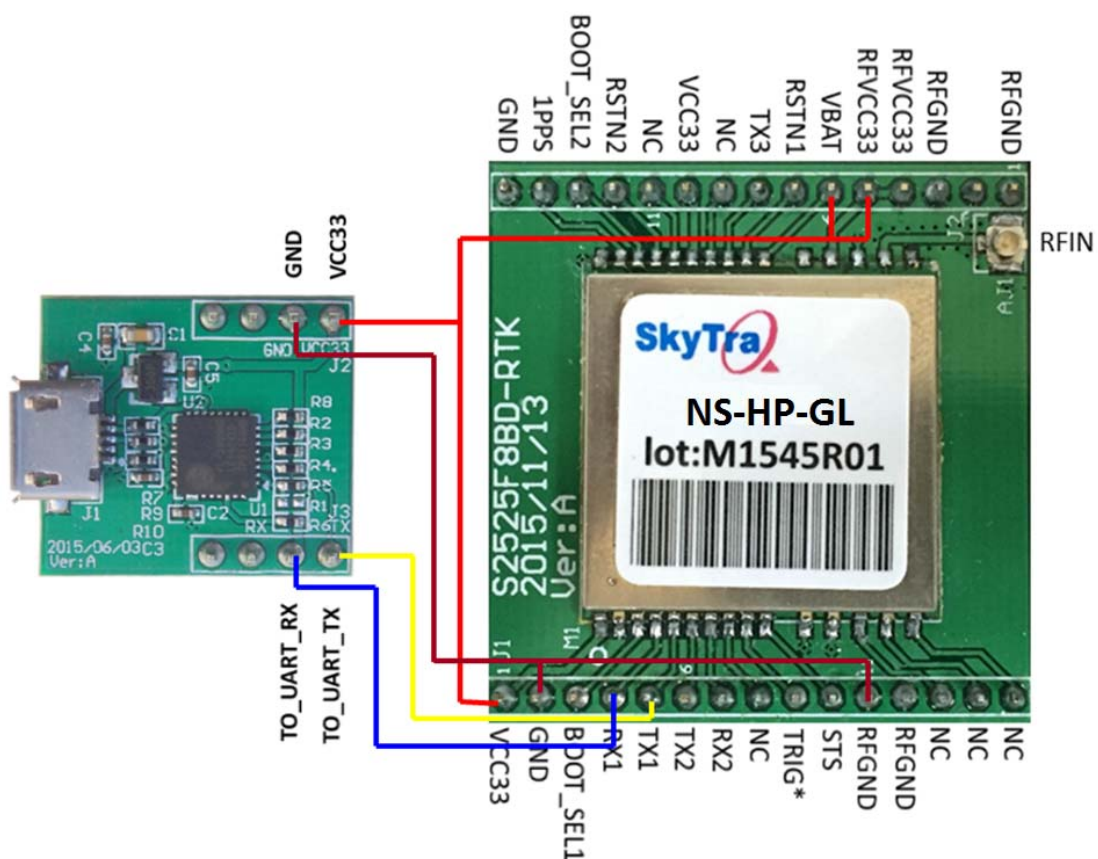
13. FIRMWARE UPDATE

When there is firmware update release, it'll be made available on the NS-HP-GL web store product page. Firmware for NS-HP-GL, NS-HP-GL-5, NS-HP-GL-5S, NS-HP-GL-10, NS-HP-GL-10S are incompatible; user should update his/her NS-HP-GL with the correct firmware.

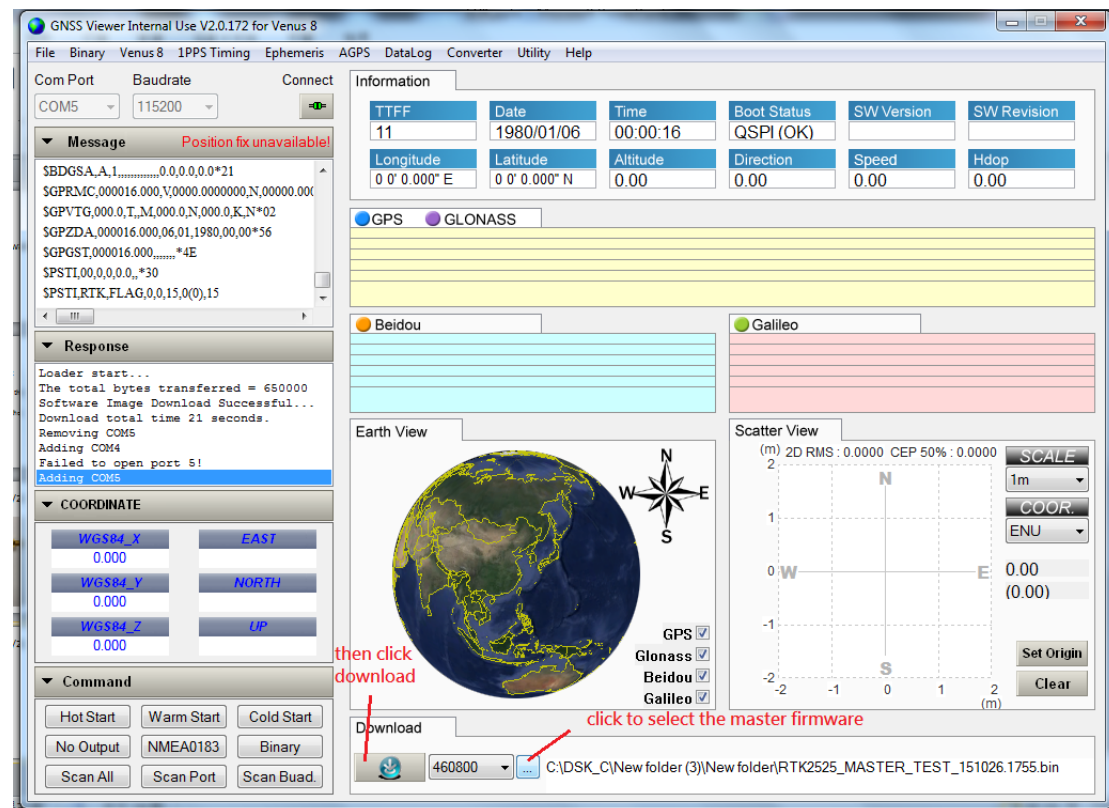
There are two 32bit RISC controllers inside NS-HP-GL module, one act as master, the other as slave. Different firmware is used to program master and slave controllers. Firmware for master controller has “master” in the filename. Firmware for slave controller has “slave” in the filename.

To update master controller firmware using GNSS Viewer:

1. Connect TX1 and RX1 to an UART-to-USB bridge breakout board for connecting to a Windows PC



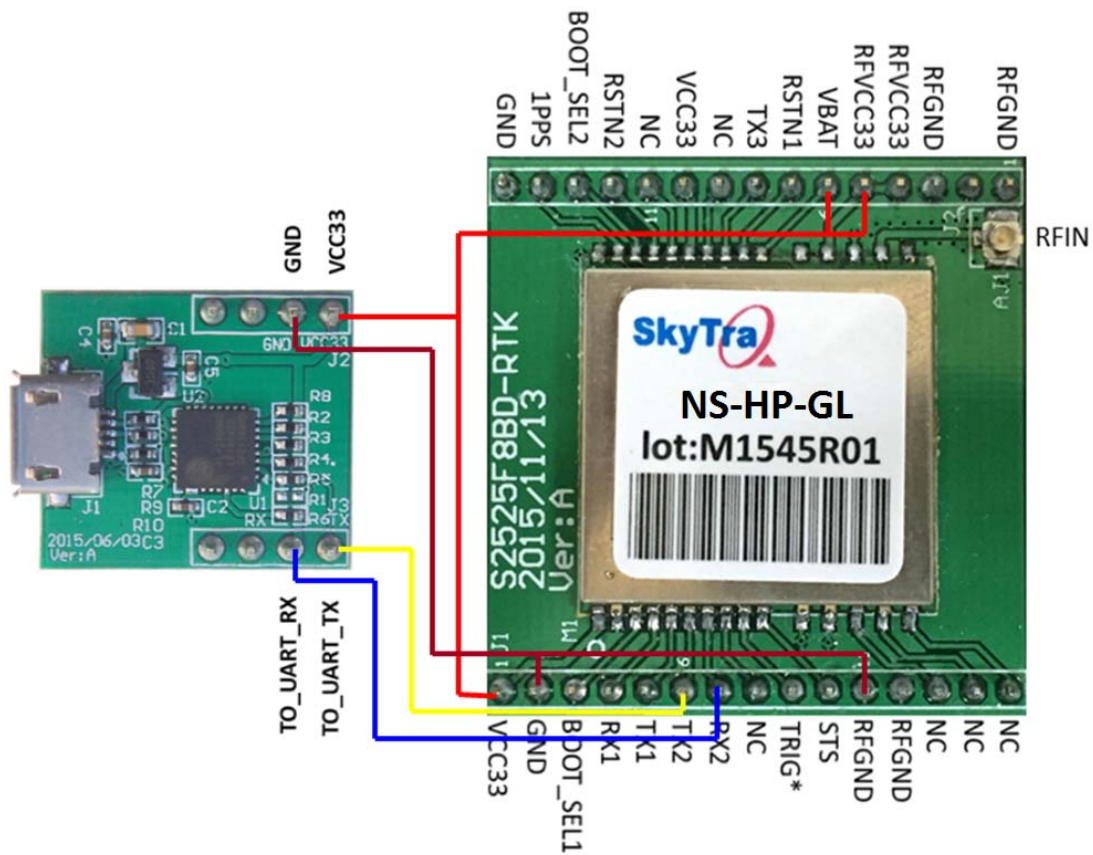
2. Connect GNSS Viewer with NS-HP-GL using correct COM port and baud rate. Select the master firmware. Click Download. After Download finishes it'll restart.



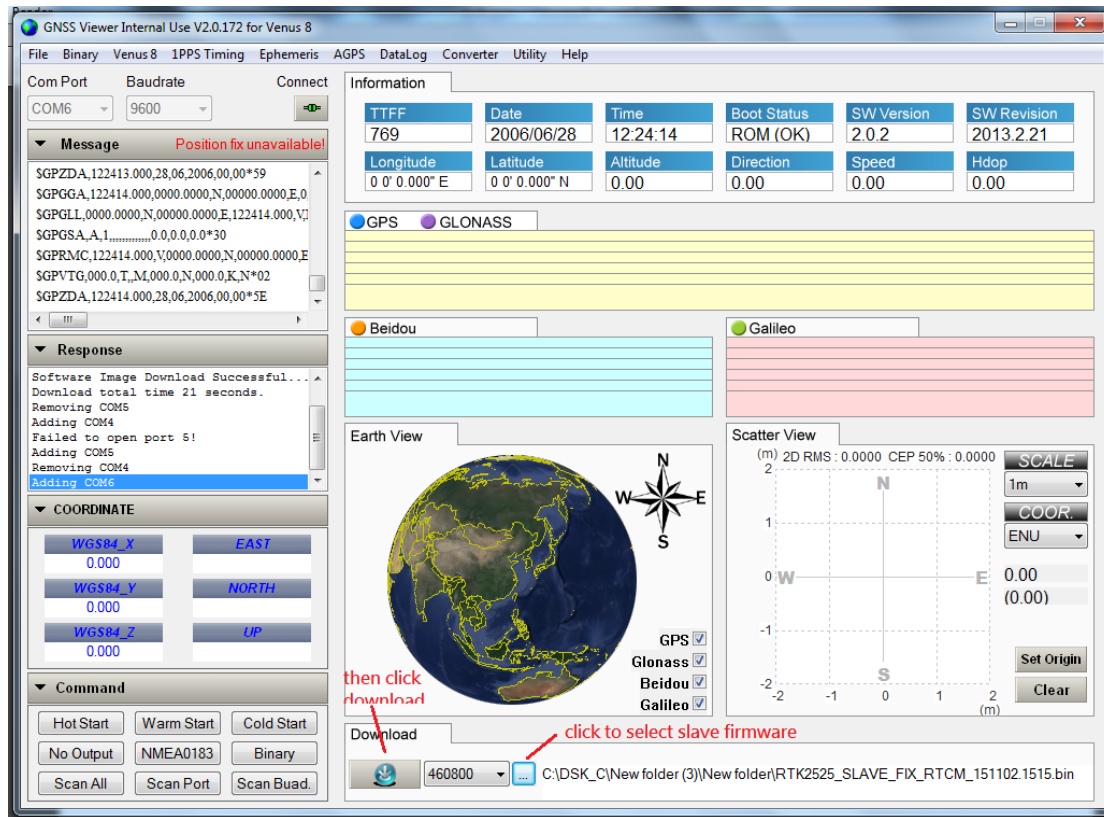
3. Master firmware has default set to rover mode. If using NS-HP-GL as base, procedure for setting up base mode and antenna position needs to be done again after firmware update,

To update slave controller firmware using GNSS Viewer:

1. Connect TX2 and RX2 to an UART-to-USB bridge breakout board for connecting to a Windows PC



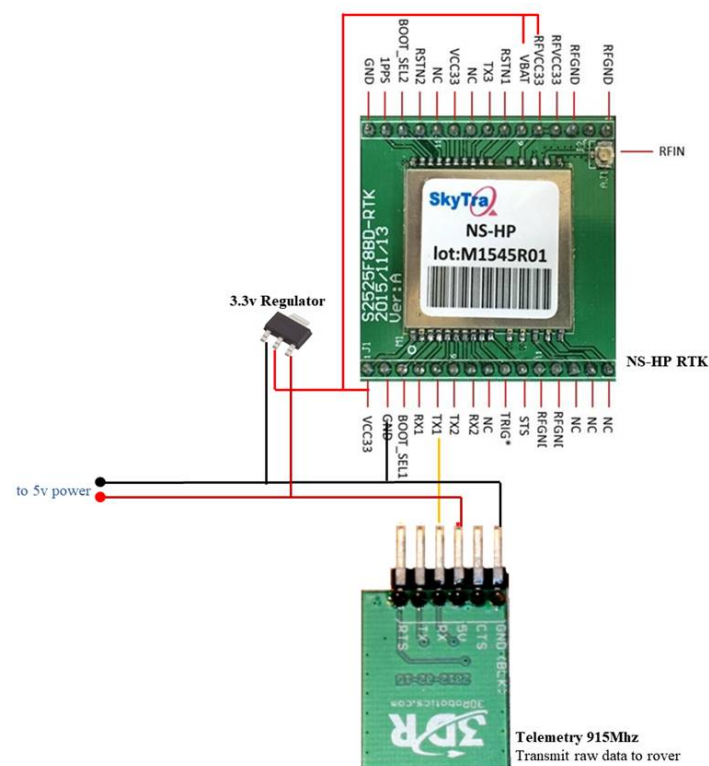
2. Connect GNSS Viewer with NS-HP-GL using correct COM port and 57600 baud rate. Select the slave firmware. Click Download. After Download finishes it'll restart.



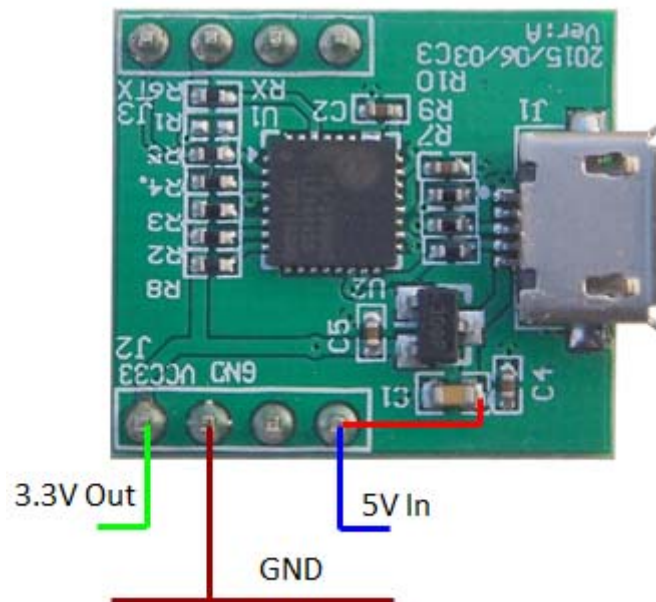
In case somehow the firmware in master or slave controller got corrupted and NS-HP-GL cannot connect with GNSS Viewer:

1. Connect BOOT_SEL1 to GND to boot master controller from ROM code instead of Flash code, recycle power by disconnect & reconnect USB, perform procedure to update master controller firmware but using 4800 baud rate. After firmware updated, disconnect BOOT_SEL1 from GND.
2. Connect BOOT_SEL2 to GND to boot slave controller from ROM code instead of Flash code, recycle power by disconnect & reconnect USB, perform procedure to update slave controller firmware but using 9600 baud rate. After firmware updated, disconnect BOOT_SEL2 from GND.

Pixhawk Rover Connection

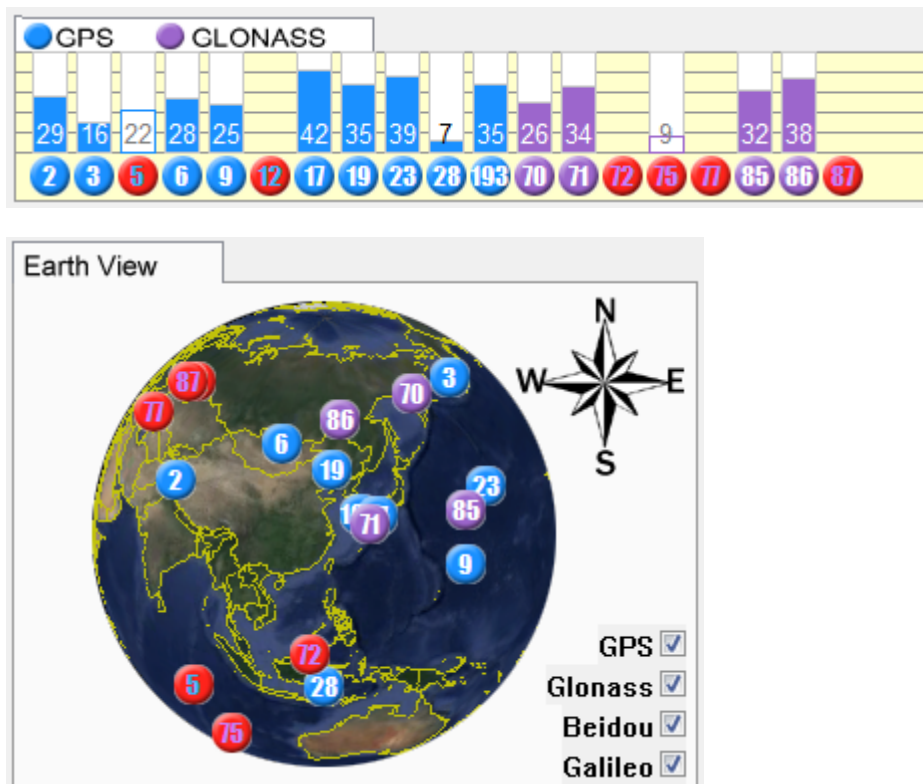


For the 3.3V Regulator in above figure, if you already have the UART-to-USB Adapter breakout board from the web-store freebie, you can modify as below adding a wire connecting pin-stick to capacitor (red wire) and have a 5V-to-3.3V LDO regulator to use.



15. FAQ

Q1: Why I cannot receive RTK fix for a long time? My received signal is as below.



A1: NS-HP-GL require at least 7 satellites, signal level above 37dB, elevation angle above 15 degrees, and good geometry to have position fix; more satellites the better. Currently there is only 3 satellites with 37dB or higher signal, thus cannot have RTK fix.

Keep antenna at least 10cm away from NS-HP-GL, farther the better, to avoid picking up its radiated digital noise, signal level will be higher if placed at distance. 7cm x 7cm or larger metallic sheet (or tin foil) placed underneath the antenna could also boost signal couple dB more.

CHANGE LOG

Version 0.3, September 30, 2017

1. Updated section 14 figures

Version 0.2, January 05, 2017

1. Updated section 1 on supported RTCM types
2. Updated section 6 to 9 on GNSS viewer configurations
3. Inserted base stream format into section 6
4. Inserted RTK reference static started position into section 7
5. Inserted section 10 on advanced moving base

Version 0.1, August 4, 2016

1. Initial release

The information provided is believed to be accurate and reliable. These materials are provided to customers and may be used for informational purposes only. No responsibility is assumed for errors or omissions in these materials, or for its use. Changes to specification can occur at any time without notice.

These materials are provided "as is" without warranty of any kind, either expressed or implied, relating to sale and/or use including liability or warranties relating to fitness for a particular purpose, consequential or incidental damages, merchantability, or infringement of any patent, copyright or other intellectual property right. No warrant on the accuracy or completeness of the information, text, graphics or other items contained within these materials. No liability assumed for any special, indirect, incidental, or consequential damages, including without limitation, lost revenues or lost profits, which may result from the use of these materials.

The product is not intended for use in medical, life-support devices, or applications involving potential risk of death, personal injury, or severe property damage in case of failure of the product.