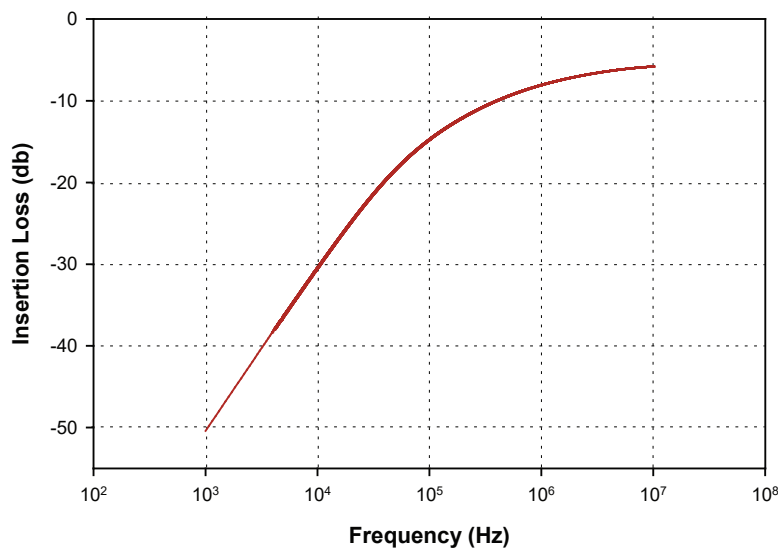
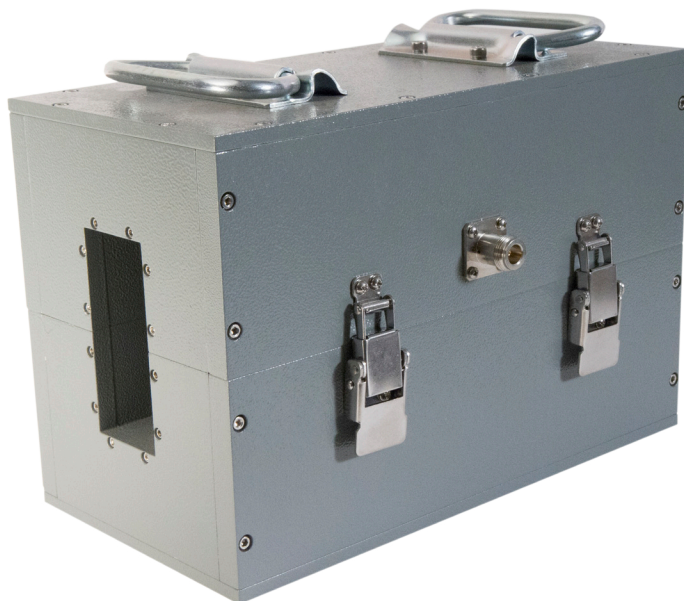


BULK CURRENT INJECTION

The F-120501-1008-1 is a high efficiency Injection Probe used primarily for low frequency conducted susceptibility testing. When performing a voltage to voltage measurement driving the single turn primary of the Probe via the Type-N input connector from a low impedance source with a 10 Ω loop as the secondary load, it has less than 1 dB of insertion loss from 1 kHz – 10 MHz. The aperture of the Probe is large enough for a user to wind his own primary turns to create custom Probe Injection configurations. When the Insertion Loss measurement is setup for 10 primary turns and the same 10 Ω load on the secondary, the input power rating of this Injection Probe is 1 kW for 30 minutes.



Specifications

Frequency: 1 kHz – 10 MHz
Coupling Window: 40 mm x 91 mm
Weight: 24 kg
External Diameter
Width: 152 mm
Height: 191 mm
Length: 286 mm
Input Power rating: 1000 watts

Accessories

F-120501-1008-2 • Calibration Fixture
Bandwidth: 1 kHz – 10 MHz
F-14A • Current Probe
Bandwidth: 100 Hz – 10 MHz
Internal Diameter: 65 mm
Transfer Impedance: 0.013 Ω

FCC

Fischer Custom Communications, Inc.

20603 Earl St., Torrance, CA 90503
Phone: 310-303-3300
Fax: 310-371-6268
Email: sales@fischercc.com

© Fischer Custom Communications, Inc.

F - 120501-1008-1