



GLENS COMMUNITY ASSOCIATION

Newsletter –Spring 2019

AGM

**GLENS COMMUNITY
ASSOCIATION**
Wednesday, June 12th,
2019, 7 P.M.

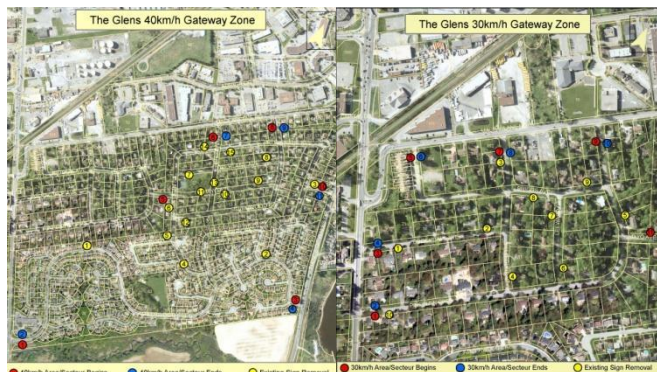
"Glens as a Heritage Village"

**The MET,
(Metropolitan Bible Church)
2176 Prince of Wales Drive**

- Hydro One, NCC, Environment, Pollution,
- Heritage Designation what to expect
- Public Health Changes are you affected?
- Wildlife concerns
- Community Police, Crime in the Area
- Taxes
- Meet our Councillor, Ask questions!
- Pick-up your water testing bottle

Gateway Signs Coming To the Glens

New provincial legislation allows municipalities to use the gateway signs wherever speed limits are less than 50 km/h. The new signs mark the start and end of areas with lower speed limits. The City would install signs on local roads in residential areas and on collector roads with speed limits of 40 kilometres per hour or less. Proposal for Pineglen Annex and Pineglen East calls for two different speed limits. Pineglen East has been already designated 30 km/h speed limit zone. To lower the speed limit to 30 km/h on Brookdale, Belledune, Leeward and Briggs petition will be circulated later in the spring. Pineglen Annex and Country Place have been designated as 40km/h zones. The traffic department have not yet considered new signage for Pineglen West or Grenfell. Requirements for lower speeds are determined based on roadway width and the existing traffic patterns (cannot exceed threshold of 35km/h or less). 2019 Budget limitations will allow implementation of gateway signage in one area per ward.



Pineglen Park

Late fall crews were in this park removing some dead and broken trees that needed attention. There are still some large hangers to cut out as well as a few more trees to be removed like the one blocking the path. The work will continue in spring. Pineglen Park has a special environmental designation so much of the downed woody material is left to keep the woodlot looking natural and allow the material to break down and return much needed nutrients back into the woodlot. The areas with excessive material will be removed so there are no piles.

We Are Among 20 Hottest Neighbourhoods

The total number of residential units sold for Pineglen & Country Place for 2019 is 9, compared with 5 in 2018. The first four month figures show an average sale price of \$712,500 in 2019, a 26.4 percent increase from 2018. For Pineglen, 5 houses were sold in 2019, with a median sale of price of \$680,000. The sharp increase of the median sale price is due to the sales of updated houses in the neighbourhood for the first four months in 2019. For Grenfell Glen, the total number of residential units sold in 2019 was 2, compared with 1 in 2018. The figures show an average sale price of \$582,500 in 2019, a 14.7 percent increase from 2018. Ottawa's aggregate home price surpassed Calgary's for the first time ever in the first quarter of 2019 – making the capital the fourth-most-expensive housing market in the country. The median price of a two-storey home in Ottawa increased 9.6 percent year-over-year to \$503,761, while bungalow prices rose four per cent to \$450,016. In the same quarter, the median price of a condominium edged up 1.7 per cent year-over-year to \$321,017.

Heritage Designation Process and Expectations

In the last newsletter, we had asked residents for comments as the City of Ottawa proceeds with the formal process of adding some properties from our neighborhood to their Heritage Register. Only a handful of properties have qualified for the registry at this time with some residents having already received their notification letters. The properties that have been added to the Heritage Register will do so as a non-designated listing, under Section 27 of the Ontario Heritage Act. The City of Ottawa initiated the Heritage Inventory Project to better preserve our built heritage. The City completed a city-wide survey and evaluation of all buildings to determine which ones contribute to our cultural heritage. If your home has been included in the heritage registry, there are no restrictions to alterations of your property. The only limitation is that the City requires owners to provide them with 60 days' notice of intent to demolish or remove a building or structure. This allows the City enough time to decide whether to allow the 60 days to expire or to begin the designation process to give long-term protection to the property. Having a heritage overlay extends and preserves the community's unique characteristics, it would help us to protect and enhance the area's special features. The issue was discussed at the last two AGMs and there seemed to be significant support for the idea.

Cedar Clippings

There is a company that will pick up your clippings for free. The clippings are being used to produce cedar oil. The Company name is **Cedar Recycle** and can be reached at **819 663 1354**.

CLEARVIEW GRENFELL GLEN PINEGLEN

Pineglen East Speeding Data

The latest readout from the speed display astonished us all. The highest speeds on MacFarlane were 150 km/h, 146 and 127. The highest speed on Merivale was 144 km/h and 130. Many drivers have been going over 100 km/h on both streets. On Pineglen East (the narrowest street in the area) a mere block from MacFarlane speeders manage to reach 82, 84 and even 91 km/h. Also, the number of cars using Pineglen reached up to 263 cars a day. GCA has asked our Councillor to revisit the idea of turn restrictions from Merivale onto Pineglen between 7-9 a.m. In accordance with new rules we do not need another traffic study and Pineglen residents overwhelmingly petitioned for this change last year.

3930/3960 Riverside Drive Zoning Amendment

Taggart Development was approved by the council. At this time, the plan calls for seniors' residence, hotel, apartment building and car dealership, with service centre (there was also an earlier proposal to include some low-rise townhomes and remove the retirement home). 5-acres of river side green space was retained for improvements to the Uplands-Riverside Park. A new signalized intersection, with median cut, will be built and maintained by Taggart to permit full entry/exit. Southbound right hand turning lane on to Hunt Club will be extended 150 metres to Kimberwick. Riverside northbound would include a separated left hand turn lane. The Hunt Club/Riverside intersection is rated F – failure and one of the City's worst for traffic collisions. An Adaptive Traffic Control pilot project has been approved to maximize efficiencies in travel time, stop reductions and delays. There will be also a safety review of the intersection to address the collision patterns. The proximity of the Rideau River added few constraints to the proposed development. Motor vehicle sales/leasing cannot display their goods in the municipal right-of-way. The visual impact of outdoor storage or parking on adjacent uses and from the street has to be minimized. The location of the automobile dealership will be restricted to use to the southernmost portion of the site. Restrictions on the placement/orientation of the automotive dealership will ensure an adequate separation from residential uses and the Rideau River. The official plan "prohibits land uses that require outside storage or large paved areas or that produce noise, fumes, dust." Site plan will address proximity and mitigate impact on protected lands (visual buffering, landscaping, lighting) and to preserve the cultural, natural, and scenic views of the river.

Highway Inn Motel - 2279 Prince of Wales

Glens, Country Place and Waterford along with a number of City departments including Bylaw, Building Code Services, Police and Legal are actively engaged in addressing the on-going problems at this location. The Community fundamentally does not understand why the City finds itself in a situation where it has no control over the unacceptable and illegal activities emanating from that business. A meeting was held on Thursday, May 9th at the MET to update residents. Deputy Chief Jaswal, Mayor's office and legal department were on hand to respond to queries. Residents were dismayed that there was no possibility of rapid improvement. Police did not present any meaningful data and residents were left concerned that the "authorities" have very little authority to deal with the situation. Glen's community has continued to use social media to warn residents, share information and encourage vigilance. The City is preparing a court application

based on a public nuisance claim. There is no question that the motel and its patrons are determined to remain in this area as the motel seemingly is undergoing renovation and the owner boasted about new expansion plans for a 4-storey, 60 room motel (no plans were submitted to the city). **In the meantime, keep your car doors, garage side doors and entrance/patio doors locked.**

Hydro One Vegetation Management

Hydro One began to use herbicide (Garlon RTU) in addition to mechanical trimming along transmission corridors in the Glens. Garlon is highly toxic herbicide affecting aquatic fauna and resulting in contamination of groundwater particularly in areas with sandy soils. A buffer zone should be maintained to avoid overspray and drift into these habitats. The spraying took place near our creek. Meeting between Glens and Hydro One resulted in understanding that Hydro One will not broadcast spray herbicides during the 2018 cycle of vegetation maintenance. The issue will be reviewed prior to a new vegetation maintenance cycle in 2024 and the community notified. Hydro One Forestry will consult with affected residents to discuss the targeted application of cut stems with EZ Ject to control re-growth on their property. Forestry will consult with each owner on the scope of work required on their property prior to any work commencing. Sadly, this year's cycle resulted in clear cutting inside the Hydro corridor, destruction of the NCC pathway and loss of privacy where the hedges were removed. Hydro One will send in crews to complete clean-up on the site and we will re-seed the area once the clean-up is complete, which will help green-up the landscape. Additionally, they will also look into the damaged benches.



Seniors Grant

Last summer, the Knoxdale-Merivale Older Adults and Persons with Disabilities (55+) Advisory Committee, in conjunction with NROCRC, had applied to Trillium New Horizons for funding to run some "new" social/recreational events for older adults in Ward 9. The funding received is directed toward Manordale, Craig Henry, Tanglewood Hillsdale and the Glens and Merivale Gardens. The budget for each group is set at \$1275. The money is to cover events between April 1st 2019 and February 29th 2020. The events would be open to all older adults in Ward 9 with the expectation that the majority of participants would come from the organizing community. Merivale Gardens already arranged for a 1.5 hour presentation by the Biodiversity Conservatory restoring the dunes to resemble their former habitat. There was also a plan of walking tour of the Black Rapids and a joint holiday event. Other suggestions welcome!!!

2019 Tree – Giveaway Event

Ecology Ottawa has 12,000 trees that need to find their forever homes. This year, in addition to nine different kinds of coniferous and deciduous trees, they will be giving away a variety of fruit- and nut-bearing trees and shrubs. There are many threats to the tree canopy:



pests, development patterns and climate change. The best ways to enhance Ottawa's tree canopy would be to replant a diversity of local native tree seedlings. Ecology Ottawa is looking to private property owners to pick up and plant some saplings.

Sump Pump Back-up Power Rebate Program.

The eligibility criteria will require that the home has an existing sump pump and that the owner's property tax payments are up to date. You may qualify for a discount on your home insurance. More info at: <https://ottawa.ca/en/residents/water-and-environment/wastewater-and-sewers/sewer-backups-and-flooding/new-rebate-available-secondary-ump-pump-backup-power>.

Provincial Funding Changes

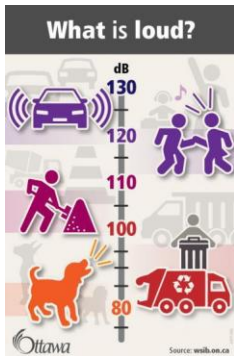
Long winter, flooding and last year's tornado have been already costly. Provincial government plans for funding cuts may affect the next City budget, our health and our pockets. Proposed changes in health-related areas are drastic. The current model requires municipality to cover 25% of The Public Health Unit and its programs. This is planned to change to 30/70 and possibly 40/60 in 2020. Some programs funded entirely by the Province will also come under this model. Paramedic hiring, immunization, harm reduction, baby checkups, preventing food-borne and water-borne illnesses and emergency preparedness will all be affected.

New Website and Membership Changes

Our new website is fully functional and offers many venues to express concerns, opinions or ask questions. We encourage all residents to sign up and take advantage of the new features. The Glens CA has increased its membership fees to \$10 for first time since 1962. We have made it easier for residents to pay their memberships and update their information. It is now possible to pay your annual membership fees online (PayPal or Credit Card). This year we will be also be having our annual membership drive in May. Be on the lookout for your Neighborhood Canvasser!!

Respect City By-laws

3-hour on-street parking limit. GCA may ask for enforcement when cars are obstructing narrow roads, affecting visibility or near community mailboxes. No parking on front lawn.



Restrictions: Clearly audible **loud noises**, music, TVs, radios, bass noise, car alarms, shouting; **Equipment:** chainsaw, lawn mowers, leaf blowers, power tools, compressors; Weekdays (9 p.m. - 7 a.m.), weekends and holidays (9 p.m. - 9 a.m.)

Demolition and construction of buildings in established residential neighbourhoods (**Infill**) not permitted weekdays (8 p.m. - 7 a.m.), weekends and

holidays (7 p.m. - 9 a.m.). **Heavy equipment** operation Monday-Saturday (10 p.m. - 7 a.m.), Sundays/holidays: (10 p.m. and 9 a.m.); The City of Ottawa has no jurisdiction over **aircraft noise**. Call Ottawa International Airport noise complaint 24 hours line at 613-248-2023.

Outdoor fireplaces are not permitted in urban areas. Wood or wood products may not be burned in an outdoor chiminea.

Resident cannot contribute, alter or obstruct a **ditch, drain, or change the lot grading** that increases, deviates or impairs the flow of storm, rain, ground, surface or subsurface water that causes or is likely to cause an adverse condition on any abutting Property.

Beach creation and vertical walls at the water's edge are generally not supported on privately or individually owned waterfronts. **Docks** and shore works which alter the shoreline will require approval from the Conservation Authority.

Community Businesses for Hire

Free ads service for youth seeking summer employment. Residents with small home businesses: \$30. Commercial businesses: \$100. Fees are renewable annually and include newsletter/ website ads for a year.



QUINN THIELE
MINEAULT
GRODZKI LLP

PERSONAL INJURY LAWYERS

Marc-Nicholas Quinn
613.563.1131
www.OttawaLawyers.com



Tingting LIU
SALES REPRESENTATIVE

OFFICE: 613.725.1171
DIRECT: 613.794.6886
tingting@royallepage.ca
www.tingtinghomes.ca



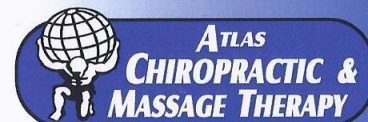
Brian J. Kelly
Financial Advisor

Edward Jones
MAKING SENSE OF INVESTING



462 Hazeldean Road, Unit #12
Kanata, ON K2L 1V3
Bus. 613-836-3159 800-942-2251
Fax 866-479-8159
brian.kelly@edwardjones.com
www.edwardjones.com

Life Insurance Agent for Edward Jones Insurance Agency



Dr. Karlo Pavich, B. Sc. D.C.
Chiropractor

2262 Prince of Wales Drive
(South of Hunt Club Rd. at Blazer Ave.)
Ottawa, Ontario K2E 7A1

613.228.0882
www.atlaschiro.ca

Services include:

- * Quality Chiropractic Care
- * Registered Massage Therapy
- * Custom Foot Orthotics
- * Electrotherapy & Ultrasound Treatments
- * Intersegmental Traction
- * Hydromassage



Restore Revive Rejuvenate



Full of Beans Party Rentals
 Bouncy Castles, Games and
 Fun Foods

613-299-0998
 FullOfBeansParty.Ca

Having years of experience in the pump industry, Aqua



Pump provides expert
 service for all your pump
 needs in the Ottawa area.

Licensed Class 4 well
 technician can extend well

casing, construct a well pit, weld casing, and install
 pumps and associated equipment.

Ramada Ottawa on the Rideau 7 km from Ottawa
 International Airport, 10 km from both Parliament Hill and
 Landsdowne Park. Complimentary Wi-Fi, mini fridges, flat-
 screen TVs, tea and coffee. Upgraded modern rooms, river
 views, balconies. Suites feature whirlpool tubs. Continental
 breakfast and an airport shuttle. Seasonal outdoor pool, spa
 area, fitness center, playground. Canoe rentals a. **2259 Prince
 of Wales Drive Ottawa, Ontario +1-613-288-3500**

metro Metro Merivale Rd.
 1705 Merivale Road
 Open Monday-Sunday
 7:00 a.m - 10:00 a.m.
 Phone number: 613-274-7274; Fax number: 613-274-7847

ELECTED REPRESENTATIVES

CHANDRA ARYA M.P. NEPEAN

House of Commons Ottawa, Ontario Canada K1A 0A6
 Telephone: 613-992-1325; Fax: 613-992-1336
Chandra.Arya@parl.gc.ca ; www.chandraarya.ca
Constituency Office: 201A/240 Kennevale Dr,
 Ottawa, ON K2J 6B6 **Phone:**(613) 825-5505

LISA MACLEOD M.P.P. NEPEAN-CARLETON

10-3500 Fallowfield Road Nepean, Ontario K2J 4A7
 Ph: 613 823-2116; Fax: 613-823-8284
lisa.macleod@pc.ola.org <http://lisamacleod.com/en/>

KEITH EGLI KNOXDALE-MERIVALE WARD 9

Tel: 613-580-2479; Fax: 613-580-2519
Keith.Egli@ottawa.ca
 Ward issues: ward9@ottawa.ca <http://keithegli.ca/>



**COMING TO PINEGLEN PARK
 IN SEPTEMBER 2019
 VOLUNTEERS NEEDED**

Glens Community Association Executive Committee Members 2018/2020

President	Agnes Warda.....226 9576
Vice President	Brian Kelly.....222 4205
Secretary	Marie Primeau-Maurice.....723 8453
Treasurer	Nicole Charbonneau.....627-5795

Directors	
Information	Cait Stone.....
Advocacy	Pat McLachlan.....225-6913
Events	Nicole Charbonneau.....627-5795
Membership	Jamie Larkin601-0492
Protocol Advisor	Penny Hammell.....224 5159
Logistics	Susan Briard.....226 8790
Visual Arts & Media	Brad McInnis.....
Seniors Issues	Ananta Chauhan.....

COMMUNITY LIAISONS

Grenfell	Cait Stone..... 853 8249
Pineglenn East	Tingting Liu.....794 6886
Pineglenn West	Pat McLachlan.....225 6913

Directors at Large	Daintry Topshee
	Kevin O'Brien
	Don Lafontaine

Glens Community Association
 5 Pineglenn Crescent
 Nepean ON K2E 6X8 E-mail: executive@glenscommunity.ca
www.glenscommunity.ca

We are on a Facebook!!!!

Share your thoughts! Become our Friend
<https://www.facebook.com/groups/1677464099198875/>

**PLEASE VISIT WWW. GLENSCOMMUNITY.CA TO
 REGISTER AND ENJOY MEMBER'S BENEFITS!**



Ottawa Police Service
MAKE THE RIGHT CALL
 ONLINE + BY PHONE

 <p>ONLINE REPORTING</p> <p>Don't wait on the phone, save time and use our online reporting service for non-emergency reports such as:</p> <ul style="list-style-type: none"> • Theft (excluding theft of passports) • Theft from Vehicle • Traffic Complaints • Mischief/Damage to Property • Drug Complaints • Fraud Complaints 	 <p>REACH US BY PHONE</p> <p>Some incidents require an officer in person, while other reports can be taken over the phone by a Call Centre agent.</p> <p>9-1-1 for emergency</p> <p>613-236-1222 for non-emergency reports TTY 613-760-8100 service for the Deaf, Deafened and Hard of Hearing</p>
--	--

For anonymous tips, contact Crime Stoppers  1-800-222-8477 (TIPS) crimestoppers.ca